

Manufacturer/Supplier:

WUXI DONGLIN SCI&TECH DEVELOPMENT CO., LTD

Address: A1-203 Mingpin CityII, No.8 Xihudong Road, Liangxi District
Wuxi Jiangsu Province, China

TELE: 86-510-82732223

FAX: 86-510-82720101-8014

Web : www.dldevelop.com

Email: info@dldevelop.com.cn service@dldevelop.com.cn

Product name: Rabbit anti-ESCO1 Antibody

Catalog: DL91843A

Synonyms: EFO1; KIAA1911; N-acetyltransferase ESCO1;
CTF7 homolog 1; Establishment factor-like protein
1; EFO1p; hEFO1; Establishment of cohesion 1
homolog 1; ECO1 homolog 1; ESO1 homolog 1

Immunogen: KLH-conjugated synthetic peptide encompassing a
sequence within the N-term region of human
ESCO1. The exact sequence is proprietary.

Form: Liquid

Concentration: 1mg/mL

Size: 100 ul/50 ul

Host: Rabbit

Reactivity: Human, Mouse, Rat

Application: WB

Clonality: Polyclonal

Dilution: WB (1/500 - 1/1000)

Entrez Gene: 114799/77805

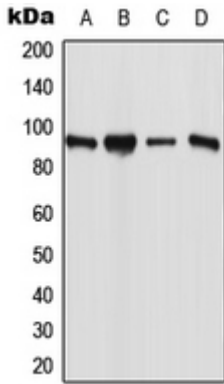
SwissProt: Q5FWF5/Q69Z69

Purification: The antibody was purified by immunogen affinity chromatography.

Buffer: Liquid in 0.42% Potassium phosphate, 0.87% Sodium chloride, pH 7.3, 30% glycerol, and 0.01% sodium azide.

WB description:

Western blot analysis of ESCO1 expression in MCF7 (A), PANC1 (B), Raw264.7 (C), H9C2 (D) whole cell lysates.



Storage:

Store at -20°C. Avoid repeated freeze / thaw cycles.