

Manufacturer/Supplier:

WUXI DONGLIN SCI&TECH DEVELOPMENT CO., LTD

Address: A1-203 Mingpin CityII, No.8 Xihudong Road, Liangxi District
Wuxi Jiangsu Province, China

TELE: 86-510-82732223

FAX: 86-510-82720101-8014

Web : www.dldevelop.com

Email: info@dldevelop.com.cn service@dldevelop.com.cn

Product name: Rabbit anti-MED30 Antibody

Catalog: DL91830A

Synonyms: THRAP6; TRAP25; Mediator of RNA polymerase II transcription subunit 30; Mediator complex subunit 30; TRAP/Mediator complex component TRAP25; Thyroid hormone receptor-associated protein 6; Thyroid hormone receptor-associated protein complex 25 kDa componen

Immunogen: KLH-conjugated synthetic peptide encompassing a sequence within the center region of human MED30. The exact sequence is proprietary.

Form: Liquid

Concentration: 1mg/mL

Size: 100 ul/50 ul

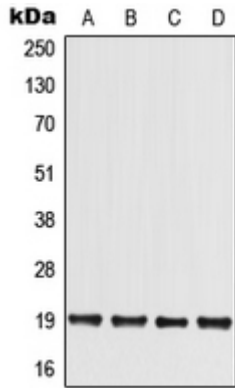
Host: Rabbit

Reactivity:

Human, Mouse, Rat, Monkey

Application: WB**Clonality:** Polyclonal**Dilution:** WB (1/500 - 1/1000)**Entrez Gene:** 90390/69790**SwissProt:** Q96HR3/Q9CQI9**Purification:** The antibody was purified by immunogen affinity chromatography.**Buffer:** Liquid in 0.42% Potassium phosphate, 0.87% Sodium chloride, pH 7.3, 30% glycerol, and 0.01% sodium azide.**WB description:**

Western blot analysis of MED30 expression in HCT116 (A), HEK293T (B), Raw264.7 (C), H9C2 (D) whole cell lysates.



Storage:

Store at -20°C. Avoid repeated freeze / thaw cycles.