

Manufacturer/Supplier:

WUXI DONGLIN SCI&TECH DEVELOPMENT CO., LTD

Address: A1-203 Mingpin CityII, No.8 Xihudong Road, Liangxi District
Wuxi Jiangsu Province, China

TELE: 86-510-82732223

FAX: 86-510-82720101-8014

Web : www.dldevelop.com

Email: info@dldevelop.com.cn service@dldevelop.com.cn

Product name: Rabbit anti-LRP11 Antibody

Catalog: DL91823A

Synonyms: Low-density lipoprotein receptor-related protein 11;
LRP-11

Immunogen: KLH-conjugated synthetic peptide encompassing a
sequence within the center region of human LRP11.
The exact sequence is proprietary.

Form: Liquid

Concentration: 1mg/mL

Size: 100 ul/50 ul

Host: Rabbit

Reactivity: Human

Application: WB, IP

Clonality: Polyclonal

Dilution: WB (1/500 - 1/1000), IP

(1/10 - 1/100)

Entrez Gene: 84918

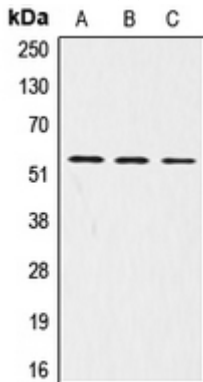
SwissProt: Q86VZ4

Purification: The antibody was purified by immunogen affinity chromatography.

Buffer: Liquid in 0.42% Potassium phosphate, 0.87% Sodium chloride, pH 7.3, 30% glycerol, and 0.01% sodium azide.

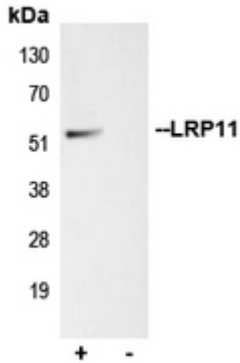
WB description:

Western blot analysis of LRP11 expression in A431 (A), HepG2 (B), Jurkat (C) whole cell lysates.



IP description:

Immunoprecipitation of LRP11 from 0.5mg Jurkat whole cell extract lysate, using 5ug of anti-LRP11 Antibody and 50ul of protein G magnetic beads (+). No antibody was added to the control (-). The antibody was incubated under agitation with Protein G beads



Storage:

Store at -20°C. Avoid repeated freeze / thaw cycles.