

Manufacturer/Supplier:

WUXI DONGLIN SCI&TECH DEVELOPMENT CO., LTD

Address: A1-203 Mingpin CityII, No.8 Xihudong Road, Liangxi District
Wuxi Jiangsu Province, China

TELE: 86-510-82732223

FAX: 86-510-82720101-8014

Web : www.dldevelop.com

Email: info@dldevelop.com.cn service@dldevelop.com.cn

Product name: Rabbit anti-CIP29 Antibody

Catalog: DL91813A

Synonyms: HCC1; SAP domain-containing ribonucleoprotein;
Cytokine-induced protein of 29 kDa; Nuclear
protein Hcc-1; Proliferation-associated
cytokine-inducible protein CIP29

Immunogen: KLH-conjugated synthetic peptide encompassing a
sequence within the C-term region of human CIP29.
The exact sequence is proprietary.

Form: Liquid

Concentration: 1mg/mL

Size: 100 ul/50 ul

Host: Rabbit

Reactivity:

Application: WB

Human,Mouse,Rat,Monkey

Clonality: Polyclonal

Dilution: WB (1/500 - 1/1000)

Entrez Gene: 84324/66118/362819

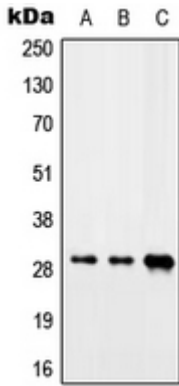
SwissProt: P82979/Q9D1J3/Q498U4

Purification: The antibody was purified by immunogen affinity chromatography.

Buffer: Liquid in 0.42% Potassium phosphate, 0.87% Sodium chloride, pH 7.3, 30% glycerol, and 0.01% sodium azide.

WB description:

Western blot analysis of CIP29 expression in Jurkat (A), mouse heart (B), rat liver (C) whole cell lysates.



Storage:

Store at -20°C. Avoid repeated freeze / thaw cycles.