

**Manufacturer/Supplier:**

WUXI DONGLIN SCI&TECH DEVELOPMENT CO., LTD

**Address:** A1-203 Mingpin CityII, No.8 Xihudong Road, Liangxi District  
Wuxi Jiangsu Province, China

TELE: 86-510-82732223

FAX: 86-510-82720101-8014

**Web :** [www.dldevelop.com](http://www.dldevelop.com)

Email: [info@dldevelop.com.cn](mailto:info@dldevelop.com.cn)    [service@dldevelop.com.cn](mailto:service@dldevelop.com.cn)

**Product name:** Rabbit anti-SUV39H2 Antibody

**Catalog:** DL91784A

**Synonyms:** KMT1B; Histone-lysine N-methyltransferase  
SUV39H2; Histone H3-K9 methyltransferase 2;  
H3-K9-HMTase 2; Lysine N-methyltransferase 1B;  
Suppressor of variegation 3-9 homolog 2;  
Su(var)3-9 homolog 2

**Immunogen:** KLH-conjugated synthetic peptide encompassing a  
sequence within the center region of human  
SUV39H2. The exact sequence is proprietary.

**Form:** Liquid

**Concentration:** 1mg/mL

**Size:** 100 ul/50 ul

**Host:** Rabbit

**Reactivity:** Human,Monkey,Pig      **Application:** WB, IP

**Clonality:** Polyclonal      **Dilution:** WB (1/500 - 1/1000), IP  
(1/10 - 1/100)

**Entrez Gene:**      79723

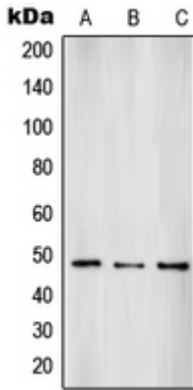
**SwissProt:**      Q9H5I1

**Purification:**      The antibody was purified by immunogen affinity chromatography.

**Buffer:**      Liquid in 0.42% Potassium phosphate, 0.87% Sodium chloride, pH 7.3, 30% glycerol, and 0.01% sodium azide.

**WB description:**

Western blot analysis of SUV39H2 expression in HepG2 (A), A431 (B), HL60 (C) whole cell lysates.



**IP description:**

**Storage:**

Store at -20°C. Avoid repeated freeze / thaw cycles.