

Manufacturer/Supplier:

WUXI DONGLIN SCI&TECH DEVELOPMENT CO., LTD

Address: A1-203 Mingpin CityII, No.8 Xihudong Road, Liangxi District
Wuxi Jiangsu Province, China

TELE: 86-510-82732223

FAX: 86-510-82720101-8014

Web : www.dldevelop.com

Email: info@dldevelop.com.cn service@dldevelop.com.cn

Product name: Rabbit anti-SEN7 Antibody

Catalog: DL91735A

Synonyms: KIAA1707; SSP2; SUSP2; Sentrin-specific protease
7; SUMO-1-specific protease 2;
Sentrin/SUMO-specific protease SEN7

Immunogen: KLH-conjugated synthetic peptide encompassing a
sequence within the C-term region of human
SEN7. The exact sequence is proprietary.

Form: Liquid

Concentration: 1mg/mL

Size: 100 ul/50 ul

Host: Rabbit

Reactivity:

Application: WB

Human, Mouse, Rat, Bovine, Dog, M

onkey,Pig

Clonality: Polyclonal

Dilution: WB (1/500 - 1/1000)

Entrez Gene: 57337/66315/288167

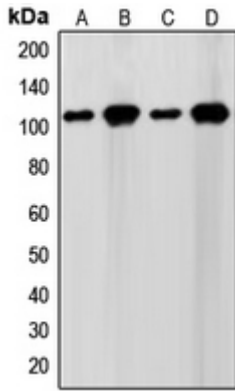
SwissProt: Q9BQF6/Q8BUH8/D3ZF42

Purification: The antibody was purified by immunogen affinity chromatography.

Buffer: Liquid in 0.42% Potassium phosphate, 0.87% Sodium chloride, pH 7.3, 30% glycerol, and 0.01% sodium azide.

WB description:

Western blot analysis of SENP7 expression in WI38 (A), HeLa (B), NIH3T3 (C), Jurkat (D) whole cell lysates.



Storage:

Store at -20°C. Avoid repeated freeze / thaw cycles.