

Manufacturer/Supplier:

WUXI DONGLIN SCI&TECH DEVELOPMENT CO., LTD

Address: A1-203 Mingpin CityII, No.8 Xihudong Road, Liangxi District
Wuxi Jiangsu Province, China

TELE: 86-510-82732223

FAX: 86-510-82720101-8014

Web : www.dldevelop.com

Email: info@dldevelop.com.cn service@dldevelop.com.cn

Product name: Rabbit anti-NBPF-pan Antibody

Catalog: DL91712A

Synonyms: NBPF12; COAS1; KIAA1245; Neuroblastoma breakpoint family member 12; Chromosome 1 amplified sequence 1; NBPF10; Neuroblastoma breakpoint family member 10; NBPF16; Neuroblastoma breakpoint family member 16; NBPF1; KIAA1693; Neuroblastoma breakpoint family m

Immunogen: KLH-conjugated synthetic peptide encompassing a sequence within the C-term region of human NBPF-pan. The exact sequence is proprietary.

Form: Liquid

Concentration: 1mg/mL

Size: 100 ul/50 ul

Host: Rabbit

Reactivity: Human

Application: WB, IP

Clonality: Polyclonal

Dilution: WB (1/500 - 1/1000), IP
(1/10 - 1/100)

Entrez Gene:

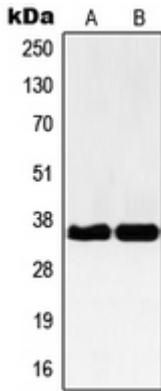
SwissProt: Q5TAG4; Q6P3W6; Q5SXJ2; Q3BBV0; Q3BBW0;
Q3BBV1; Q8N660; Q5TI25

Purification: The antibody was purified by immunogen affinity chromatography.

Buffer: Liquid in 0.42% Potassium phosphate, 0.87% Sodium chloride, pH 7.3, 30% glycerol, and 0.01% sodium azide.

WB description:

Western blot analysis of NBPF-pan expression in Jurkat (A), HEK293 (B) whole cell lysates.



IP description:

Storage:

Store at -20°C. Avoid repeated freeze / thaw cycles.