

Manufacturer/Supplier:

WUXI DONGLIN SCI&TECH DEVELOPMENT CO., LTD

Address: A1-203 Mingpin CityII, No.8 Xihudong Road, Liangxi District
Wuxi Jiangsu Province, China

TELE: 86-510-82732223

FAX: 86-510-82720101-8014

Web : www.dldevelop.com

Email: info@dldevelop.com.cn service@dldevelop.com.cn

Product name: Rabbit anti-RCBTB1 Antibody

Catalog: DL91704A

Synonyms: CLLD7; E4.5; RCC1 and BTB domain-containing protein 1; Chronic lymphocytic leukemia deletion region gene 7 protein; CLL deletion region gene 7 protein; Regulator of chromosome condensation and BTB domain-containing protein 1

Immunogen: KLH-conjugated synthetic peptide encompassing a sequence within the center region of human RCBTB1. The exact sequence is proprietary.

Form: Liquid

Concentration: 1mg/mL

Size: 100 ul/50 ul

Host: Rabbit

Reactivity:

Human, Mouse, Dog, Monkey, Pig

Application: WB, IHC**Clonality:** Polyclonal

Dilution: WB (1/500 - 1/1000),
IHC (1/100 - 1/200)

Entrez Gene: 55213/71330

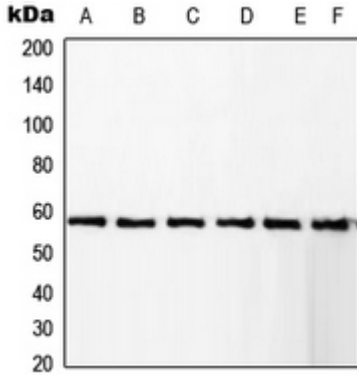
SwissProt: Q8NDN9/Q6NXM2

Purification: The antibody was purified by immunogen affinity chromatography.

Buffer: Liquid in 0.42% Potassium phosphate, 0.87% Sodium chloride, pH 7.3, 30% glycerol, and 0.01% sodium azide.

WB description:

Western blot analysis of RCBTB1 expression in KNRK (A), Jurkat (B), A431 (C), HeLa (D), Raw264.7 (E), NIH3T3 (F) whole cell lysates.



IHC description:

Immunohistochemical analysis of RCBTB1 staining in human breast cancer formalin fixed paraffin embedded tissue section. The section was pre-treated using heat mediated antigen retrieval with sodium citrate buffer (pH 6.0). The section was then incubated with the antibody at room temperature and detected using an HRP conjugated compact polymer system. DAB was used as the chromogen. The section was then counterstained with haematoxylin and mounted with DPX.

Storage:

Store at -20°C. Avoid repeated freeze / thaw cycles.