

**Manufacturer/Supplier:**

WUXI DONGLIN SCI&TECH DEVELOPMENT CO., LTD

**Address:** A1-203 Mingpin CityII, No.8 Xihudong Road. Liangxi District  
Wuxi Jiangsu Province, China

TELE: 86-510-82732223

FAX: 86-510-82720101-8014

**Web :** [www.dldevelop.com](http://www.dldevelop.com)

Email: [info@dldevelop.com.cn](mailto:info@dldevelop.com.cn) [service@dldevelop.com.cn](mailto:service@dldevelop.com.cn)

**Product name:** Rabbit anti-ATP6V1H Antibody

**Catalog:** DL91676A

**Synonyms:** V-type proton ATPase subunit H; V-ATPase subunit H; Nef-binding protein 1; NBP1; Protein VMA13 homolog; V-ATPase 50/57 kDa subunits; Vacuolar proton pump subunit H; Vacuolar proton pump subunit SFD

**Immunogen:** KLH-conjugated synthetic peptide encompassing a sequence within the center region of human ATP6V1H. The exact sequence is proprietary.

**Form:** Liquid

**Concentration:** 1mg/mL

**Size:** 100 ul/50 ul

**Host:** Rabbit

**Reactivity:**

Human, Mouse, Bovine, Monkey, Pig, Zebrafish

**Application:** WB, IP**Clonality:** Polyclonal

**Dilution:** WB (1/500 - 1/1000), IP (1/10 - 1/100)

**Entrez Gene:** 51606/108664

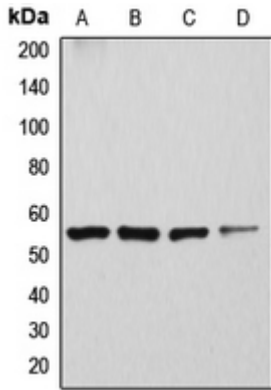
**SwissProt:** Q9UI12/Q8BVE3

**Purification:** The antibody was purified by immunogen affinity chromatography.

**Buffer:** Liquid in 0.42% Potassium phosphate, 0.87% Sodium chloride, pH 7.3, 30% glycerol, and 0.01% sodium azide.

**WB description:**

Western blot analysis of ATP6V1H expression in Caki1 (A), SKNSH (B), rat kidney (C), mouse brain (D) whole cell lysates.



**IP description:**

**Storage:**

Store at -20°C. Avoid repeated freeze / thaw cycles.