

Manufacturer/Supplier:

WUXI DONGLIN SCI&TECH DEVELOPMENT CO., LTD

Address: A1-203 Mingpin CityII, No.8 Xihudong Road, Liangxi District
Wuxi Jiangsu Province, China

TELE: 86-510-82732223

FAX: 86-510-82720101-8014

Web : www.dldevelop.com

Email: info@dldevelop.com.cn service@dldevelop.com.cn

Product name: Rabbit anti-MED15 Antibody

Catalog: DL91675A

Synonyms: ARC105; CTG7A; PCQAP; TIG1; TNRC7;
Mediator of RNA polymerase II transcription
subunit 15; Activator-recruited cofactor 105 kDa
component; ARC105; CTG repeat protein 7a;
Mediator complex subunit 15; Positive cofactor 2
glutamine/Q-rich-associated protein;

Immunogen: KLH-conjugated synthetic peptide encompassing a
sequence within the center region of human
MED15. The exact sequence is proprietary.

Form: Liquid

Concentration: 1mg/mL

Size: 100 ul/50 ul

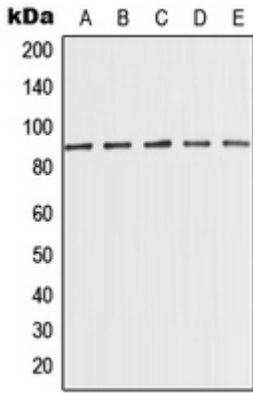
Host: Rabbit

Reactivity:

Human, Mouse, Rat, Zebrafish

Application: WB**Clonality:** Polyclonal**Dilution:** WB (1/500 - 1/1000)**Entrez Gene:** 51586**SwissProt:** Q96RN5/Q924H2**Purification:** The antibody was purified by immunogen affinity chromatography.**Buffer:** Liquid in 0.42% Potassium phosphate, 0.87% Sodium chloride, pH 7.3, 30% glycerol, and 0.01% sodium azide.**WB description:**

Western blot analysis of MED15 expression in MCF7 (A), K562 (B), HeLa (C), NIH3T3 (D), PC12 (E) whole cell lysates.



Storage:

Store at -20°C. Avoid repeated freeze / thaw cycles.