

Manufacturer/Supplier:

WUXI DONGLIN SCI&TECH DEVELOPMENT CO., LTD

Address: A1-203 Mingpin CityII, No.8 Xihudong Road, Liangxi District
Wuxi Jiangsu Province, China

TELE: 86-510-82732223

FAX: 86-510-82720101-8014

Web : www.dldevelop.com

Email: info@dldevelop.com.cn service@dldevelop.com.cn

Product name: Rabbit anti-JIK Antibody

Catalog: DL91664A

Synonyms:

DPK; JIK; KDS; MAP3K18;
Serine/threonine-protein kinase TAO3; Cutaneous
T-cell lymphoma-associated antigen HD-CL-09;
CTCL-associated antigen HD-CL-09; Dendritic
cell-derived protein kinase; JNK/SAPK-inhibitory
kinase; Jun kinase-inhibitory kinase; Kinase

Immunogen:

KLH-conjugated synthetic peptide encompassing a
sequence within the center region of human JIK.
The exact sequence is proprietary.

Form: Liquid

Concentration: 1mg/mL

Size: 100 ul/50 ul

Host: Rabbit

Reactivity: Human, Mouse, Rat **Application:** WB

Clonality: Polyclonal **Dilution:** WB (1/500 - 1/1000)

Entrez Gene: 51347/330177/304530

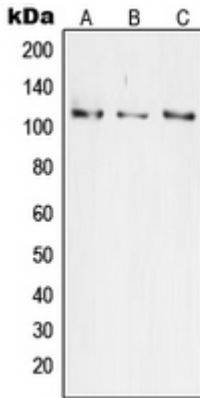
SwissProt: Q9H2K8/Q8BYC6/Q53UA7

Purification: The antibody was purified by immunogen affinity chromatography.

Buffer: Liquid in 0.42% Potassium phosphate, 0.87% Sodium chloride, pH 7.3, 30% glycerol, and 0.01% sodium azide.

WB description:

Western blot analysis of JIK expression in HeLa (A), Jurkat (B), HEK293 (C) whole cell lysates.



Storage:

Store at -20°C. Avoid repeated freeze / thaw cycles.