

Manufacturer/Supplier:

WUXI DONGLIN SCI&TECH DEVELOPMENT CO., LTD

Address: A1-203 Mingpin CityII, No.8 Xihudong Road, Liangxi District
Wuxi Jiangsu Province, China

TELE: 86-510-82732223

FAX: 86-510-82720101-8014

Web : www.dldevelop.com

Email: info@dldevelop.com.cn service@dldevelop.com.cn

Product name: Rabbit anti-SAP130 Antibody

Catalog: DL91574A

Synonyms: KIAA0017; SAP130; Splicing factor 3B subunit 3;
Pre-mRNA-splicing factor SF3b 130 kDa subunit;
SF3b130; STAF130; Spliceosome-associated
protein 130; SAP 130

Immunogen: KLH-conjugated synthetic peptide encompassing a
sequence within the center region of human
SAP130. The exact sequence is proprietary.

Form: Liquid

Concentration: 1mg/mL

Size: 100 ul/50 ul

Host: Rabbit

Reactivity:

Application: WB

Human, Mouse, Rat, Bovine, Zebrafish

Clonality: Polyclonal

Dilution: WB (1/500 - 1/1000)

Entrez Gene: 23450/101943

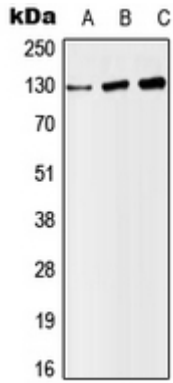
SwissProt: Q15393/Q921M3

Purification: The antibody was purified by immunogen affinity chromatography.

Buffer: Liquid in 0.42% Potassium phosphate, 0.87% Sodium chloride, pH 7.3, 30% glycerol, and 0.01% sodium azide.

WB description:

Western blot analysis of SAP130 expression in HeLa (A), SP2/0 (B), H9C2 (C) whole cell lysates.



Storage:

Store at -20°C. Avoid repeated freeze / thaw cycles.