

Manufacturer/Supplier:

WUXI DONGLIN SCI&TECH DEVELOPMENT CO., LTD

Address: A1-203 Mingpin CityII, No.8 Xihudong Road, Liangxi District
Wuxi Jiangsu Province, China

TELE: 86-510-82732223

FAX: 86-510-82720101-8014

Web : www.dldevelop.com

Email: info@dldevelop.com.cn service@dldevelop.com.cn

Product name: Rabbit anti-PIP5K1C Antibody

Catalog: DL91572A

Synonyms: KIAA0589; Phosphatidylinositol 4-phosphate
5-kinase type-1 gamma; PIP5K1-gamma;
PtdIns(4)P-5-kinase 1 gamma; Phosphatidylinositol
4-phosphate 5-kinase type I gamma; PIP5K1gamma

Immunogen: KLH-conjugated synthetic peptide encompassing a
sequence within the center region of human
PIP5K1C. The exact sequence is proprietary.

Form: Liquid

Concentration: 1mg/mL

Size: 100 ul/50 ul

Host: Rabbit

Reactivity:

Application: WB

Human,Mouse,Rat,Monkey

Clonality: Polyclonal

Dilution: WB (1/500 - 1/1000)

Entrez Gene: 23396/18717/314641

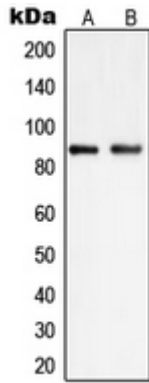
SwissProt: O60331/O70161/Q5I6B8

Purification: The antibody was purified by immunogen affinity chromatography.

Buffer: Liquid in 0.42% Potassium phosphate, 0.87% Sodium chloride, pH 7.3, 30% glycerol, and 0.01% sodium azide.

WB description:

Western blot analysis of PIP5K1C expression in HEK293 (A), K562 (B) whole cell lysates.



Storage:

Store at -20°C. Avoid repeated freeze / thaw cycles.