

Manufacturer/Supplier:

WUXI DONGLIN SCI&TECH DEVELOPMENT CO., LTD

Address: A1-203 Mingpin CityII, No.8 Xihudong Road, Liangxi District
Wuxi Jiangsu Province, China

TELE: 86-510-82732223

FAX: 86-510-82720101-8014

Web : www.dldevelop.com

Email: info@dldevelop.com.cn service@dldevelop.com.cn

Product name: Rabbit anti-DUSP14 Antibody

Catalog: DL91530A

Synonyms: MKP6; Dual specificity protein phosphatase 14;
MKP-1-like protein tyrosine phosphatase; MKP-L;
Mitogen-activated protein kinase phosphatase 6;
MAP kinase phosphatase 6; MKP-6

Immunogen: KLH-conjugated synthetic peptide encompassing a
sequence within the C-term region of human
DUSP14. The exact sequence is proprietary.

Form: Liquid

Concentration: 1mg/mL

Size: 100 ul/50 ul

Host: Rabbit

Reactivity:

Application: WB

Human,Mouse,Rat,Pig,Rabbit

Clonality: Polyclonal

Dilution: WB (1/500 - 1/1000)

Entrez Gene: 11072/56405

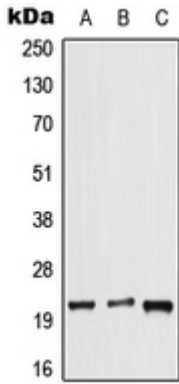
SwissProt: O95147/Q9JLY7

Purification: The antibody was purified by immunogen affinity chromatography.

Buffer: Liquid in 0.42% Potassium phosphate, 0.87% Sodium chloride, pH 7.3, 30% glycerol, and 0.01% sodium azide.

WB description:

Western blot analysis of DUSP14 expression in HeLa (A), mouse testis (B), rat testis (C) whole cell lysates.



Storage:

Store at -20°C. Avoid repeated freeze / thaw cycles.