

Manufacturer/Supplier:

WUXI DONGLIN SCI&TECH DEVELOPMENT CO., LTD

Address: A1-203 Mingpin CityII, No.8 Xihudong Road. Liangxi District
Wuxi Jiangsu Province, China

TELE: 86-510-82732223

FAX: 86-510-82720101-8014

Web : www.dldevelop.com

Email: info@dldevelop.com.cn service@dldevelop.com.cn

Product name: Rabbit anti-MASP2 Antibody

Catalog: DL91507A

Synonyms: Mannan-binding lectin serine protease 2;
MBL-associated serine protease 2;
Mannose-binding protein-associated serine protease
2; MASP-2

Immunogen: KLH-conjugated synthetic peptide encompassing a
sequence within the center region of human
MASP2. The exact sequence is proprietary.

Form: Liquid

Concentration: 1mg/mL

Size: 100 ul/50 ul

Host: Rabbit

Reactivity: Human, Mouse

Application: WB

Clonality: Polyclonal

Dilution: WB (1/500 - 1/1000)

Entrez Gene: 10747/17175

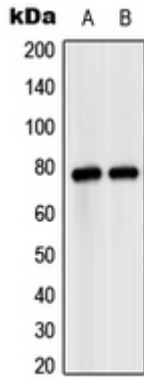
SwissProt: O00187/Q91WP0

Purification: The antibody was purified by immunogen affinity chromatography.

Buffer: Liquid in 0.42% Potassium phosphate, 0.87% Sodium chloride, pH 7.3, 30% glycerol, and 0.01% sodium azide.

WB description:

Western blot analysis of MASP2 expression in HeLa (A), SP2/0 (B) whole cell lysates.



Storage:

Store at -20°C. Avoid repeated freeze / thaw cycles.