

Manufacturer/Supplier:

WUXI DONGLIN SCI&TECH DEVELOPMENT CO., LTD

Address: A1-203 Mingpin CityII, No.8 Xihudong Road, Liangxi District
Wuxi Jiangsu Province, China

TELE: 86-510-82732223

FAX: 86-510-82720101-8014

Web : www.dldevelop.com

Email: info@dldevelop.com.cn service@dldevelop.com.cn

Product name: Rabbit anti-MRPL28 Antibody

Catalog: DL91494A

Synonyms: MAAT1; 39S ribosomal protein L28, mitochondrial; L28mt; MRP-L28; Melanoma antigen p15; Melanoma-associated antigen recognized by T-lymphocytes

Immunogen: KLH-conjugated synthetic peptide encompassing a sequence within the center region of human MRPL28. The exact sequence is proprietary.

Form: Liquid

Concentration: 1mg/mL

Size: 100 ul/50 ul

Host: Rabbit

Reactivity:

Application: WB

Human,Mouse,Rat,Bovine

Clonality: Polyclonal

Dilution: WB (1/500 - 1/1000)

Entrez Gene: 10573/68611

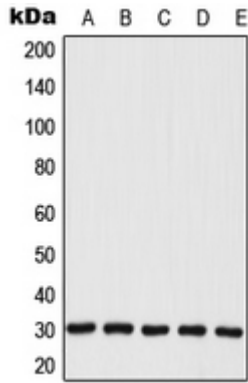
SwissProt: Q13084/Q9D1B9

Purification: The antibody was purified by immunogen affinity chromatography.

Buffer: Liquid in 0.42% Potassium phosphate, 0.87% Sodium chloride, pH 7.3, 30% glycerol, and 0.01% sodium azide.

WB description:

Western blot analysis of MRPL28 expression in JAR (A), MCF7 (B), A549 (C), Raw264.7 (D), H9C2 (E) whole cell lysates.



Storage:

Store at -20°C. Avoid repeated freeze / thaw cycles.