

Manufacturer/Supplier:

WUXI DONGLIN SCI&TECH DEVELOPMENT CO., LTD

Address: A1-203 Mingpin CityII, No.8 Xihudong Road. Liangxi District
Wuxi Jiangsu Province, China

TELE: 86-510-82732223

FAX: 86-510-82720101-8014

Web : www.dldevelop.com

Email: info@dldevelop.com.cn service@dldevelop.com.cn

Product name: Rabbit anti-NHE6 Antibody

Catalog: DL91488A

Synonyms: KIAA0267; NHE6; Sodium/hydrogen exchanger 6;
Na(+)/H(+) exchanger 6; NHE-6; Solute carrier
family 9 member 6

Immunogen: KLH-conjugated synthetic peptide encompassing a
sequence within the center region of human NHE6.
The exact sequence is proprietary.

Form: Liquid

Concentration: 1mg/mL

Size: 100 ul/50 ul

Host: Rabbit

Reactivity:
Human, Mouse, Rat, Bovine, Chick

Application: WB

n,Dog,Pig,Rabbit

Clonality: Polyclonal

Dilution: WB (1/500 - 1/1000)

Entrez Gene: 10479

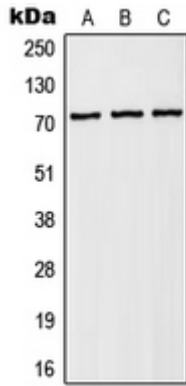
SwissProt: Q92581

Purification: The antibody was purified by immunogen affinity chromatography.

Buffer: Liquid in 0.42% Potassium phosphate, 0.87% Sodium chloride, pH 7.3, 30% glycerol, and 0.01% sodium azide.

WB description:

Western blot analysis of NHE6 expression in HEK293T (A), Raw264.7 (B), PC12 (C) whole cell lysates.



Storage:

Store at -20°C. Avoid repeated freeze / thaw cycles.