

Manufacturer/Supplier:

WUXI DONGLIN SCI&TECH DEVELOPMENT CO., LTD

Address: A1-203 Mingpin CityII, No.8 Xihudong Road, Liangxi District
Wuxi Jiangsu Province, China

TELE: 86-510-82732223

FAX: 86-510-82720101-8014

Web : www.dldevelop.com

Email: info@dldevelop.com.cn service@dldevelop.com.cn

Product name: Rabbit anti-EPAC1 Antibody

Catalog: DL91478A

Synonyms: CGEF1; EPAC; EPAC1; Rap guanine nucleotide exchange factor 3; Exchange factor directly activated by cAMP 1; Exchange protein directly activated by cAMP 1; EPAC 1; Rap1 guanine-nucleotide-exchange factor directly activated by cAMP; cAMP-regulated guanine n

Immunogen: KLH-conjugated synthetic peptide encompassing a sequence within the C-term region of human EPAC1. The exact sequence is proprietary.

Form: Liquid

Concentration: 1mg/mL

Size: 100 ul/50 ul

Host: Rabbit

Reactivity:

Human, Mouse, Rat, Bovine, Dog

Application: WB, IF/IC**Clonality:** Polyclonal

Dilution: WB (1/500 - 1/1000),
IF/IC (1/100 - 1/500)

Entrez Gene:

10411/223864/59326

SwissProt:

O95398/Q8VCC8/Q9Z1C8

Purification:

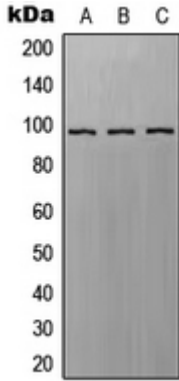
The antibody was purified by immunogen affinity chromatography.

Buffer:

Liquid in 0.42% Potassium phosphate, 0.87% Sodium chloride, pH 7.3, 30% glycerol, and 0.01% sodium azide.

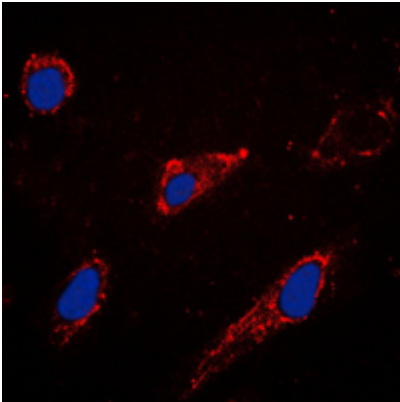
WB description:

Western blot analysis of EPAC1 expression in A549 (A), SP2/0 (B), H9C2 (C) whole cell lysates.



IF/ICC description:

Immunofluorescent analysis of EPAC1 staining in A549 cells. Formalin-fixed cells were permeabilized with 0.1% Triton X-100 in TBS for 5-10 minutes and blocked with 3% BSA-PBS for 30 minutes at room temperature. Cells were probed with the primary antibody



Storage:



Store at -20°C. Avoid repeated freeze / thaw cycles.