

Manufacturer/Supplier:

WUXI DONGLIN SCI&TECH DEVELOPMENT CO., LTD

Address: A1-203 Mingpin CityII, No.8 Xihudong Road, Liangxi District
Wuxi Jiangsu Province, China

TELE: 86-510-82732223

FAX: 86-510-82720101-8014

Web : www.dldevelop.com

Email: info@dldevelop.com.cn service@dldevelop.com.cn

Product name: Rabbit anti-KCNMB2 Antibody

Catalog: DL91464A

Synonyms: Calcium-activated potassium channel subunit beta-2; BK channel subunit beta-2; BKbeta2; Hbeta2; Calcium-activated potassium channel, subfamily M subunit beta-2; Charybdotoxin receptor subunit beta-2; Hbeta3; K(VCA)beta-2; Maxi K channel subunit beta-2; Sl

Immunogen: KLH-conjugated synthetic peptide encompassing a sequence within the center region of human KCNMB2. The exact sequence is proprietary.

Form: Liquid

Concentration: 1mg/mL

Size: 100 ul/50 ul

Host: Rabbit

Reactivity:

Human, Mouse, Rat, Bovine

Application: WB, IP**Clonality:** Polyclonal

Dilution: WB (1/500 - 1/1000), IP
(1/10 - 1/100)

Entrez Gene:

10242/72413/294961

SwissProt:

Q9Y691/Q9CZM9/Q811Q0

Purification:

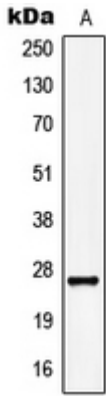
The antibody was purified by immunogen affinity chromatography.

Buffer:

Liquid in 0.42% Potassium phosphate, 0.87% Sodium chloride, pH 7.3, 30% glycerol, and 0.01% sodium azide.

WB description:

Western blot analysis of KCNMB2 expression in HepG2 (A) whole cell lysates.



IP description:

Storage:

Store at -20°C. Avoid repeated freeze / thaw cycles.