

Manufacturer/Supplier:

WUXI DONGLIN SCI&TECH DEVELOPMENT CO., LTD

Address: A1-203 Mingpin CityII, No.8 Xihudong Road, Liangxi District
Wuxi Jiangsu Province, China

TELE: 86-510-82732223

FAX: 86-510-82720101-8014

Web : www.dldevelop.com

Email: info@dldevelop.com.cn service@dldevelop.com.cn

Product name: Rabbit anti-ARP3 Antibody

Catalog: DL91453A

Synonyms: ARP3; Actin-related protein 3; Actin-like protein 3

Immunogen: KLH-conjugated synthetic peptide encompassing a sequence within the C-term region of human ARP3. The exact sequence is proprietary.

Form: Liquid

Concentration: 1mg/mL

Size: 100 ul/50 ul

Host: Rabbit

Reactivity:

Human, Mouse, Rat, Bovine, Chicken, Dog, Pig, Rabbit, Zebrafish

Application: WB

Clonality: Polyclonal

Dilution: WB (1/500 - 1/1000)

Entrez Gene: 10096/74117/81732

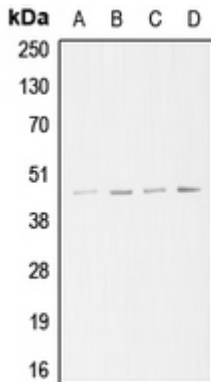
SwissProt: P61158/Q99JY9/Q4V7C7

Purification: The antibody was purified by immunogen affinity chromatography.

Buffer: Liquid in 0.42% Potassium phosphate, 0.87% Sodium chloride, pH 7.3, 30% glycerol, and 0.01% sodium azide.

WB description:

Western blot analysis of ARP3 expression in A549 (A), Jurkat (B), HeLa (C), A431 (D) whole cell lysates.



Storage:

Store at -20°C. Avoid repeated freeze / thaw cycles.