

Manufacturer/Supplier:

WUXI DONGLIN SCI&TECH DEVELOPMENT CO., LTD

Address: A1-203 Mingpin CityII, No.8 Xihudong Road, Liangxi District
Wuxi Jiangsu Province, China

TELE: 86-510-82732223

FAX: 86-510-82720101-8014

Web : www.dldevelop.com

Email: info@dldevelop.com.cn service@dldevelop.com.cn

Product name: Rabbit anti-GPRIN2 Antibody

Catalog: DL91417A

Synonyms: KIAA0514; G protein-regulated inducer of neurite outgrowth 2; GRIN2

Immunogen: KLH-conjugated synthetic peptide encompassing a sequence within the N-term region of human GPRIN2. The exact sequence is proprietary.

Form: Liquid

Concentration: 1mg/mL

Size: 100 ul/50 ul

Host: Rabbit

Reactivity: Human

Application: WB, IHC, IP

Clonality: Polyclonal

Dilution: WB (1/500 - 1/1000),

IHC (1/100 - 1/200), IP (1/10 - 1/100)

Entrez Gene: 9721

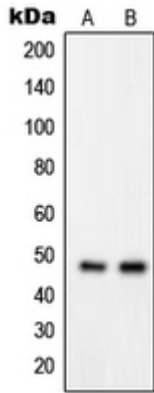
SwissProt: O60269

Purification: The antibody was purified by immunogen affinity chromatography.

Buffer: Liquid in 0.42% Potassium phosphate, 0.87% Sodium chloride, pH 7.3, 30% glycerol, and 0.01% sodium azide.

WB description:

Western blot analysis of GPRIN2 expression in MDAMB435 (A), K562 (B) whole cell lysates.



IHC description:

Immunohistochemical analysis of GPRIN2 staining in human brain formalin fixed paraffin embedded tissue section. The section was pre-treated using heat mediated antigen retrieval with sodium citrate buffer (pH 6.0). The section was then incubated with the antibody at room temperature and detected using an HRP conjugated compact polymer system. DAB was used as the chromogen. The section was then counterstained with haematoxylin and mounted with DPX.

IP description:

Storage:

Store at -20°C. Avoid repeated freeze / thaw cycles.