

Manufacturer/Supplier:

WUXI DONGLIN SCI&TECH DEVELOPMENT CO., LTD

Address: A1-203 Mingpin CityII, No.8 Xihudong Road, Liangxi District
Wuxi Jiangsu Province, China

TELE: 86-510-82732223

FAX: 86-510-82720101-8014

Web : www.dldevelop.com

Email: info@dldevelop.com.cn service@dldevelop.com.cn

Product name: Rabbit anti-MSK1 (pT581) Antibody

Catalog: DL91376A

Synonyms: MSK1; Ribosomal protein S6 kinase alpha-5;
S6K-alpha-5; 90 kDa ribosomal protein S6 kinase 5;
Nuclear mitogen- and stress-activated protein kinase
1; RSK-like protein kinase; RSKL

Immunogen: KLH-conjugated synthetic peptide encompassing a
sequence within the center region of human MSK1.
The exact sequence is proprietary.

Form: Liquid

Concentration: 1mg/mL

Size: 100 ul/50 ul

Host: Rabbit

Reactivity:

Application: WB

Human, Mouse, Rat, Bovine, Chicken, Dog, Monkey, Pig, Rabbit

Clonality: Polyclonal

Dilution: WB (1/500 - 1/1000)

Entrez Gene: 9252/73086

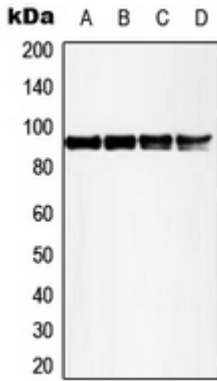
SwissProt: O75582/Q8C050

Purification: The antibody was purified by immunogen affinity chromatography.

Buffer: Liquid in 0.42% Potassium phosphate, 0.87% Sodium chloride, pH 7.3, 30% glycerol, and 0.01% sodium azide.

WB description:

Western blot analysis of MSK1 (pT581) expression in HeLa UV-treated (A), 293 UV-treated (B), SP2/0 UV-treated (C), rat liver (D) whole cell lysates.



Storage:

Store at -20°C. Avoid repeated freeze / thaw cycles.