

Manufacturer/Supplier:

WUXI DONGLIN SCI&TECH DEVELOPMENT CO., LTD

Address: A1-203 Mingpin CityII, No.8 Xihudong Road, Liangxi District
Wuxi Jiangsu Province, China

TELE: 86-510-82732223

FAX: 86-510-82720101-8014

Web : www.dldevelop.com

Email: info@dldevelop.com.cn service@dldevelop.com.cn

Product name: Rabbit anti-NOLC1 Antibody

Catalog: DL91371A

Synonyms: KIAA0035; NS5ATP13; Nucleolar and coiled-body phosphoprotein 1; 140 kDa nucleolar phosphoprotein; Nopp140; Hepatitis C virus NS5A-transactivated protein 13; HCV NS5A-transactivated protein 13; Nucleolar 130 kDa protein; Nucleolar phosphoprotein p130

Immunogen: KLH-conjugated synthetic peptide encompassing a sequence within the C-term region of human NOLC1. The exact sequence is proprietary.

Form: Liquid

Concentration: 1mg/mL

Size: 100 ul/50 ul

Host: Rabbit

Reactivity:

Human, Mouse, Rat, Bovine

Application: WB**Clonality:** Polyclonal**Dilution:** WB (1/500 - 1/1000)**Entrez Gene:**

9221/64896

SwissProt:

Q14978/P41777

Purification:

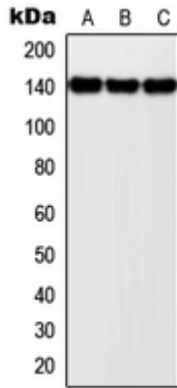
The antibody was purified by immunogen affinity chromatography.

Buffer:

Liquid in 0.42% Potassium phosphate, 0.87% Sodium chloride, pH 7.3, 30% glycerol, and 0.01% sodium azide.

WB description:

Western blot analysis of NOLC1 expression in MCF7 (A), SP2/0 (B), PC12 (C) whole cell lysates.



Storage:

Store at -20°C. Avoid repeated freeze / thaw cycles.