

Manufacturer/Supplier:

WUXI DONGLIN SCI&TECH DEVELOPMENT CO., LTD

Address: A1-203 Mingpin CityII, No.8 Xihudong Road, Liangxi District
Wuxi Jiangsu Province, China

TELE: 86-510-82732223

FAX: 86-510-82720101-8014

Web : www.dldevelop.com

Email: info@dldevelop.com.cn service@dldevelop.com.cn

Product name: Rabbit anti-SOCS3 Antibody

Catalog: DL91342A

Synonyms: CIS3; SSI3; Suppressor of cytokine signaling 3;
SOCS-3; Cytokine-inducible SH2 protein 3; CIS-3;
STAT-induced STAT inhibitor 3; SSI-3

Immunogen: KLH-conjugated synthetic peptide encompassing a
sequence within the center region of human SOCS3.
The exact sequence is proprietary.

Form: Liquid

Concentration: 1mg/mL

Size: 100 ul/50 ul

Host: Rabbit

Reactivity:

Application: WB

Human, Mouse, Rat, Bovine, Chick

n,Dog,Pig,Sheep

Clonality: Polyclonal

Dilution: WB (1/500 - 1/1000)

Entrez Gene: 9021/12702/89829

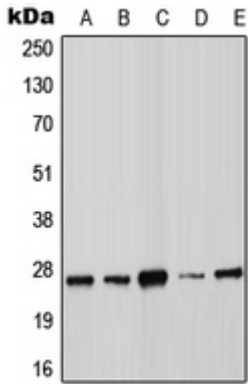
SwissProt: O14543/O35718/O88583

Purification: The antibody was purified by immunogen affinity chromatography.

Buffer: Liquid in 0.42% Potassium phosphate, 0.87% Sodium chloride, pH 7.3, 30% glycerol, and 0.01% sodium azide.

WB description:

Western blot analysis of SOCS3 expression in MOLT4 (A), A431 (B), MCF7 (C), Raw264.7 (D), H9C2 (E) whole cell lysates.



Storage:

Store at -20°C. Avoid repeated freeze / thaw cycles.