

Manufacturer/Supplier:

WUXI DONGLIN SCI&TECH DEVELOPMENT CO., LTD

Address: A1-203 Mingpin CityII, No.8 Xihudong Road, Liangxi District
Wuxi Jiangsu Province, China

TELE: 86-510-82732223

FAX: 86-510-82720101-8014

Web : www.dldevelop.com

Email: info@dldevelop.com.cn service@dldevelop.com.cn

Product name: Rabbit anti-B3GALT1 Antibody

Catalog: DL91310A

Synonyms: Beta-1,3-galactosyltransferase 1; Beta-1,3-GalTase
1; Beta3Gal-T1; Beta3GalT1;
UDP-galactose:beta-N-acetyl-glucosamine-beta-1,3-
galactosyltransferase 1

Immunogen: KLH-conjugated synthetic peptide encompassing a
sequence within the center region of human
B3GALT1. The exact sequence is proprietary.

Form: Liquid

Concentration: 1mg/mL

Size: 100 ul/50 ul

Host: Rabbit

Reactivity: Human, Mouse, Rat

Application: WB, IP

Clonality: Polyclonal

Dilution: WB (1/500 - 1/1000), IP
(1/10 - 1/100)

Entrez Gene: 8708/26877

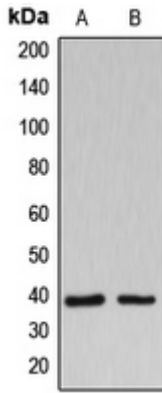
SwissProt: Q9Y5Z6/O54904

Purification: The antibody was purified by immunogen affinity chromatography.

Buffer: Liquid in 0.42% Potassium phosphate, 0.87% Sodium chloride, pH 7.3, 30% glycerol, and 0.01% sodium azide.

WB description:

Western blot analysis of B3GALT1 expression in Jurkat (A), HuvEc (B) whole cell lysates.



IP description:

Storage:

Store at -20°C. Avoid repeated freeze / thaw cycles.