

**Manufacturer/Supplier:**

WUXI DONGLIN SCI&TECH DEVELOPMENT CO., LTD

**Address:** A1-203 Mingpin CityII, No.8 Xihudong Road, Liangxi District  
Wuxi Jiangsu Province, China

TELE: 86-510-82732223

FAX: 86-510-82720101-8014

**Web :** [www.dldevelop.com](http://www.dldevelop.com)

Email: [info@dldevelop.com.cn](mailto:info@dldevelop.com.cn)    [service@dldevelop.com.cn](mailto:service@dldevelop.com.cn)

**Product name:** Rabbit anti-MRCK alpha Antibody

**Catalog:** DL91282A

**Synonyms:** KIAA0451; Serine/threonine-protein kinase MRCK alpha; CDC42-binding protein kinase alpha; DMPK-like alpha; Myotonic dystrophy kinase-related CDC42-binding kinase alpha; MRCK alpha; Myotonic dystrophy protein kinase-like alpha

**Immunogen:** KLH-conjugated synthetic peptide encompassing a sequence within the center region of human MRCK alpha. The exact sequence is proprietary.

**Form:** Liquid

**Concentration:** 1mg/mL

**Size:** 100 ul/50 ul

**Host:** Rabbit

**Reactivity:** Human, Mouse, Rat

**Application:** WB

**Clonality:** Polyclonal

**Dilution:** WB (1/500 - 1/1000)

**Entrez Gene:** 8476/226751/114116

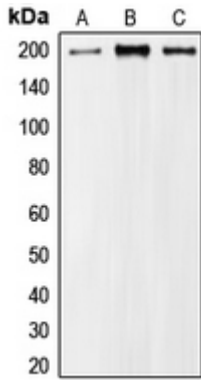
**SwissProt:** Q5VT25/Q3UU96/O54874

**Purification:** The antibody was purified by immunogen affinity chromatography.

**Buffer:** Liquid in 0.42% Potassium phosphate, 0.87% Sodium chloride, pH 7.3, 30% glycerol, and 0.01% sodium azide.

**WB description:**

Western blot analysis of MRCK alpha expression in A549 (A), HeLa (B), NIH3T3 (C) whole cell lysates.



**Storage:**

Store at -20°C. Avoid repeated freeze / thaw cycles.