

Manufacturer/Supplier:

WUXI DONGLIN SCI&TECH DEVELOPMENT CO., LTD

Address: A1-203 Mingpin CityII, No.8 Xihudong Road, Liangxi District
Wuxi Jiangsu Province, China

TELE: 86-510-82732223

FAX: 86-510-82720101-8014

Web : www.dldevelop.com

Email: info@dldevelop.com.cn service@dldevelop.com.cn

Product name: Rabbit anti-14-3-3 zeta Antibody

Catalog: DL91245A

Synonyms: 14-3-3 protein zeta/delta; Protein kinase C inhibitor protein 1; KCIP-1

Immunogen: KLH-conjugated synthetic peptide encompassing a sequence within the center region of human 14-3-3 zeta. The exact sequence is proprietary.

Form: Liquid

Concentration: 1mg/mL

Size: 100 ul/50 ul

Host: Rabbit

Reactivity:

Human, Mouse, Rat, Bovine, Chicken, Pig, Sheep

Application: WB, IP

Clonality: Polyclonal

Dilution: WB (1/500 - 1/1000), IP
(1/10 - 1/100)

Entrez Gene: 7534/22631/25578

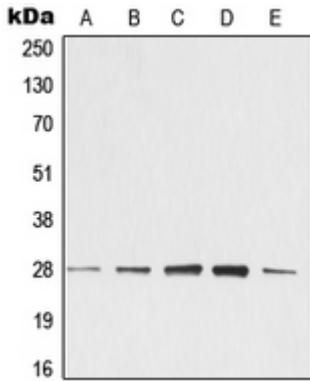
SwissProt: P63104/P63101/P63102

Purification: The antibody was purified by immunogen affinity chromatography.

Buffer: Liquid in 0.42% Potassium phosphate, 0.87% Sodium chloride, pH 7.3, 30% glycerol, and 0.01% sodium azide.

WB description:

Western blot analysis of 14-3-3 zeta expression in KNRK (A), NIH3T3 (B), C4 (C), EOC20 (D), CTLL2 (E) whole cell lysates.



IP description:

Storage:

Store at -20°C. Avoid repeated freeze / thaw cycles.