

Manufacturer/Supplier:

WUXI DONGLIN SCI&TECH DEVELOPMENT CO., LTD

Address: A1-203 Mingpin CityII, No.8 Xihudong Road, Liangxi District
Wuxi Jiangsu Province, China

TELE: 86-510-82732223

FAX: 86-510-82720101-8014

Web : www.dldevelop.com

Email: info@dldevelop.com.cn service@dldevelop.com.cn

Product name: Rabbit anti-14-3-3 epsilon Antibody

Catalog: DL91241A

Synonyms: 14-3-3 protein epsilon; 14-3-3E

Immunogen: KLH-conjugated synthetic peptide encompassing a sequence within the C-term region of human 14-3-3 epsilon. The exact sequence is proprietary.

Form: Liquid

Concentration: 1mg/mL

Size: 100 ul/50 ul

Host: Rabbit

Reactivity:
Human, Mouse, Rat, Bovine, Chick
en, Monkey, Sheep, Zebrafish

Application: WB, IF/IC

Clonality: Polyclonal

Dilution: WB (1/500 - 1/1000),
IF/IC (1/100 - 1/500)

Entrez Gene: 7531/22627/29753

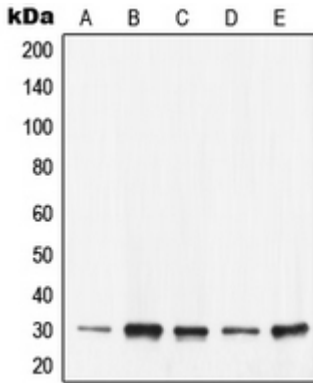
SwissProt: P62258/P62259/P62260

Purification: The antibody was purified by immunogen affinity chromatography.

Buffer: Liquid in 0.42% Potassium phosphate, 0.87% Sodium chloride, pH 7.3, 30% glycerol, and 0.01% sodium azide.

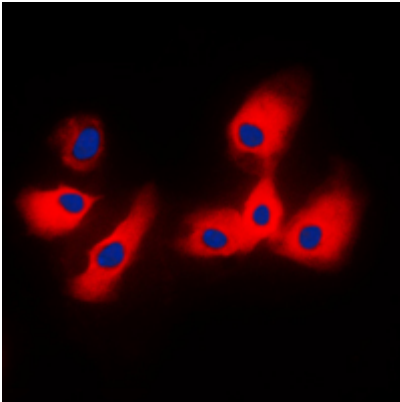
WB description:

Western blot analysis of 14-3-3 epsilon expression in KNRK (A), SW480 (B), Caco2 (C), NIH3T3 (D), H9C2 (E) whole cell lysates.



IF/ICC description:

Immunofluorescent analysis of 14-3-3 epsilon staining in NIH3T3 cells. Formalin-fixed cells were permeabilized with 0.1% Triton X-100 in TBS for 5-10 minutes and blocked with 3% BSA-PBS for 30 minutes at room temperature. Cells were probed with the primar



Storage:



Store at -20°C. Avoid repeated freeze / thaw cycles.