

Manufacturer/Supplier:

WUXI DONGLIN SCI&TECH DEVELOPMENT CO., LTD

Address: A1-203 Mingpin CityII, No.8 Xihudong Road, Liangxi District
Wuxi Jiangsu Province, China

TELE: 86-510-82732223

FAX: 86-510-82720101-8014

Web : www.dldevelop.com

Email: info@dldevelop.com.cn service@dldevelop.com.cn

Product name: Rabbit anti-CLIP2 Antibody

Catalog: DL91230A

Synonyms: CYLN2; KIAA0291; WBSCR3; WBSCR4;
WSCR4; CAP-Gly domain-containing linker
protein 2; Cytoplasmic linker protein 115;
CLIP-115; Cytoplasmic linker protein 2;
Williams-Beuren syndrome chromosomal region 3
protein; Williams-Beuren syndrome chromosomal
region

Immunogen: KLH-conjugated synthetic peptide encompassing a
sequence within the C-term region of human CLIP2.
The exact sequence is proprietary.

Form: Liquid

Concentration: 1mg/mL

Size: 100 ul/50 ul

Host: Rabbit

Reactivity: Human,Monkey

Application: WB

Clonality: Polyclonal

Dilution: WB (1/500 - 1/1000)

Entrez Gene: 7461

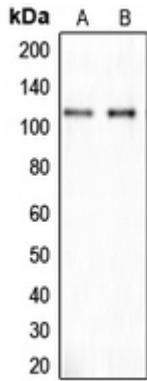
SwissProt: Q9UDT6

Purification: The antibody was purified by immunogen affinity chromatography.

Buffer: Liquid in 0.42% Potassium phosphate, 0.87% Sodium chloride, pH 7.3, 30% glycerol, and 0.01% sodium azide.

WB description:

Western blot analysis of CLIP2 expression in SHSY5Y (A), A549 (B) whole cell lysates.



Storage:

Store at -20°C. Avoid repeated freeze / thaw cycles.