

**Manufacturer/Supplier:**

WUXI DONGLIN SCI&TECH DEVELOPMENT CO., LTD

**Address:** A1-203 Mingpin CityII, No.8 Xihudong Road, Liangxi District  
Wuxi Jiangsu Province, China

TELE: 86-510-82732223

FAX: 86-510-82720101-8014

**Web :** [www.dldevelop.com](http://www.dldevelop.com)

Email: [info@dldevelop.com.cn](mailto:info@dldevelop.com.cn) [service@dldevelop.com.cn](mailto:service@dldevelop.com.cn)

**Product name:** Rabbit anti-VEGFB Antibody

**Catalog:** DL91220A

**Synonyms:** VRF; Vascular endothelial growth factor B;  
VEGF-B; VEGF-related factor; VRF

**Immunogen:** KLH-conjugated synthetic peptide encompassing a  
sequence within the center region of human  
VEGFB. The exact sequence is proprietary.

**Form:** Liquid

**Concentration:** 1mg/mL

**Size:** 100 ul/50 ul

**Host:** Rabbit

**Reactivity:** Human, Monkey

**Application:** SELISA, WB, IHC

**Clonality:** Polyclonal

**Dilution:** SE (Use a concentration

of 0.5 ug/ml), WB (1/500 -  
1/1000), IHC (1/100 - 1/200)

**Entrez Gene:** 7423

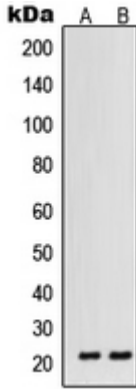
**SwissProt:** P49765

**Purification:** The antibody was purified by immunogen affinity chromatography.

**Buffer:** Liquid in 0.42% Potassium phosphate, 0.87% Sodium chloride, pH 7.3, 30% glycerol, and 0.01% sodium azide.

**WB description:**

Western blot analysis of VEGFB expression in HT1080 (A), ACHN (B) whole cell lysates.



### IHC description:

Immunohistochemical analysis of VEGFB staining in human breast cancer formalin fixed paraffin embedded tissue section. The section was pre-treated using heat mediated antigen retrieval with sodium citrate buffer (pH 6.0). The section was then incubated with the antibody at room temperature and detected using an HRP conjugated compact polymer system. DAB was used as the chromogen. The section was then counterstained with haematoxylin and mounted with DPX.

### Storage:

Store at -20°C. Avoid repeated freeze / thaw cycles.