

Manufacturer/Supplier:

WUXI DONGLIN SCI&TECH DEVELOPMENT CO., LTD

Address: A1-203 Mingpin CityII, No.8 Xihudong Road. Liangxi District
Wuxi Jiangsu Province, China

TELE: 86-510-82732223

FAX: 86-510-82720101-8014

Web : www.dldevelop.com

Email: info@dldevelop.com.cn service@dldevelop.com.cn

Product name: Rabbit anti-UGCG Antibody

Catalog: DL91209A

Synonyms: Ceramide glucosyltransferase; GLCT-1;
Glucosylceramide synthase; GCS; UDP-glucose
ceramide glucosyltransferase;
UDP-glucose:N-acylsphingosine
D-glucosyltransferase

Immunogen: KLH-conjugated synthetic peptide encompassing a
sequence within the N-term region of human
UGCG. The exact sequence is proprietary.

Form: Liquid

Concentration: 1mg/mL

Size: 100 ul/50 ul

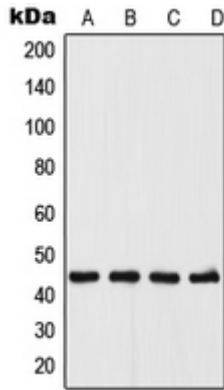
Host: Rabbit

Reactivity:

Human, Mouse, Rat, Bovine, Pig

Application: WB**Clonality:** Polyclonal**Dilution:** WB (1/500 - 1/1000)**Entrez Gene:** 7357/22234/83626**SwissProt:** Q16739/O88693/Q9R0E0**Purification:** The antibody was purified by immunogen affinity chromatography.**Buffer:** Liquid in 0.42% Potassium phosphate, 0.87% Sodium chloride, pH 7.3, 30% glycerol, and 0.01% sodium azide.**WB description:**

Western blot analysis of UGCG expression in A375 (A), MCF7 (B), Raw264.7 (C), PC12 (D) whole cell lysates.



Storage:

Store at -20°C. Avoid repeated freeze / thaw cycles.