

Manufacturer/Supplier:

WUXI DONGLIN SCI&TECH DEVELOPMENT CO., LTD

Address: A1-203 Mingpin CityII, No.8 Xihudong Road. Liangxi District
Wuxi Jiangsu Province, China

TELE: 86-510-82732223

FAX: 86-510-82720101-8014

Web : www.dldevelop.com

Email: info@dldevelop.com.cn service@dldevelop.com.cn

Product name: Rabbit anti-UBE2D2 Antibody

Catalog: DL91204A

Synonyms: PUBC1; UBC4; UBC5B; UBCH4; UBCH5B;
Ubiquitin-conjugating enzyme E2 D2; Ubiquitin
carrier protein D2; Ubiquitin-conjugating enzyme
E2(17)KB 2; Ubiquitin-conjugating enzyme E2-17
kDa 2; Ubiquitin-protein ligase D2; p53-regulated
ubiquitin-conjugating enzyme

Immunogen: KLH-conjugated synthetic peptide encompassing a
sequence within the C-term region of human
UBE2D2. The exact sequence is proprietary.

Form: Liquid

Concentration: 1mg/mL

Size: 100 ul/50 ul

Host: Rabbit

Reactivity:

Human, Mouse, Rat, Bovine, Pig

Application: WB, IP**Clonality:** Polyclonal

Dilution: WB (1/500 - 1/1000), IP
(1/10 - 1/100)

Entrez Gene:

7322/56550/641452

SwissProt:

P62837/P62838/P62839

Purification:

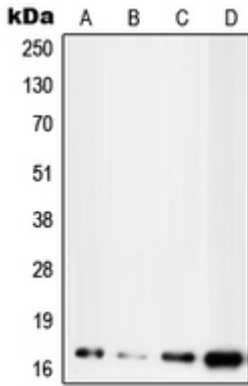
The antibody was purified by immunogen affinity chromatography.

Buffer:

Liquid in 0.42% Potassium phosphate, 0.87% Sodium chloride, pH 7.3, 30% glycerol, and 0.01% sodium azide.

WB description:

Western blot analysis of UBE2D2 expression in MCF7 (A), HepG2 (B), NIH3T3 (C), H9C2 (D) whole cell lysates.



IP description:

Storage:

Store at -20°C. Avoid repeated freeze / thaw cycles.