

**Manufacturer/Supplier:**

WUXI DONGLIN SCI&TECH DEVELOPMENT CO., LTD

**Address:** A1-203 Mingpin CityII, No.8 Xihudong Road, Liangxi District  
Wuxi Jiangsu Province, China

TELE: 86-510-82732223

FAX: 86-510-82720101-8014

**Web :** [www.dldevelop.com](http://www.dldevelop.com)

Email: [info@dldevelop.com.cn](mailto:info@dldevelop.com.cn) [service@dldevelop.com.cn](mailto:service@dldevelop.com.cn)

**Product name:** Rabbit anti-UBE2A/B Antibody

**Catalog:** DL91203A

**Synonyms:** UBE2A; RAD6A; Ubiquitin-conjugating enzyme E2 A; RAD6 homolog A; HR6A; hHR6A; Ubiquitin carrier protein A; Ubiquitin-protein ligase A; UBE2B; RAD6B; Ubiquitin-conjugating enzyme E2 B; RAD6 homolog B; HR6B; hHR6B; Ubiquitin carrier protein B; Ubiquitin-con

**Immunogen:** KLH-conjugated synthetic peptide encompassing a sequence within the C-term region of human UBE2A/B. The exact sequence is proprietary.

**Form:** Liquid

**Concentration:** 1mg/mL

**Size:** 100 ul/50 ul

**Host:** Rabbit

**Reactivity:**

Human, Mouse, Rat, Chicken, Zebra fish

**Application:** WB**Clonality:** Polyclonal**Dilution:** WB (1/500 - 1/1000)**Entrez Gene:**

7320/22209; 22210/81816

**SwissProt:**

P49459; P63146/Q9Z255; P63147/P63149

**Purification:**

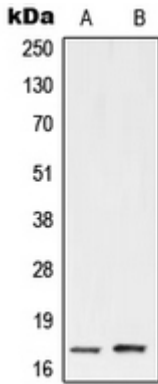
The antibody was purified by immunogen affinity chromatography.

**Buffer:**

Liquid in 0.42% Potassium phosphate, 0.87% Sodium chloride, pH 7.3, 30% glycerol, and 0.01% sodium azide.

**WB description:**

Western blot analysis of UBE2A/B expression in HeLa (A), Jurkat (B) whole cell lysates.



**Storage:**

Store at -20°C. Avoid repeated freeze / thaw cycles.