

Manufacturer/Supplier:

WUXI DONGLIN SCI&TECH DEVELOPMENT CO., LTD

Address: A1-203 Mingpin CityII, No.8 Xihudong Road, Liangxi District
Wuxi Jiangsu Province, China

TELE: 86-510-82732223

FAX: 86-510-82720101-8014

Web : www.dldevelop.com

Email: info@dldevelop.com.cn service@dldevelop.com.cn

Product name: Rabbit anti-Ub Antibody

Catalog: DL91201A

Synonyms: UBB; Polyubiquitin-B; UBC; Polyubiquitin-C;
RPS27A; UBA80; UBCEP1; Ubiquitin-40S
ribosomal protein S27a; Ubiquitin carboxyl
extension protein 80; UBA52; UBCEP2;
Ubiquitin-60S ribosomal protein L40; CEP52;
Ubiquitin A-52 residue ribosomal protein fusion pr

Immunogen: KLH-conjugated synthetic peptide encompassing a
sequence within the center region of human Ub. The
exact sequence is proprietary.

Form: Liquid

Concentration: 1mg/mL

Size: 100 ul/50 ul

Host: Rabbit

Reactivity:

Human, Mouse, Rat, Bovine, Chicken, Monkey, Pig, Rabbit

Application: WB, IHC**Clonality:** Polyclonal

Dilution: WB (1/500 - 1/1000),
IHC (1/100 - 1/200)

Entrez Gene:

7311/22187; 22190; 78294; 22186/192255; 50522;
100912032; 64156

SwissProt:

P0CG47; P0CG48; P62979; P62987/P0CG49;
P0CG50; P62983; P62984/P0CG51; Q63429;
P62982; P62986

Purification:

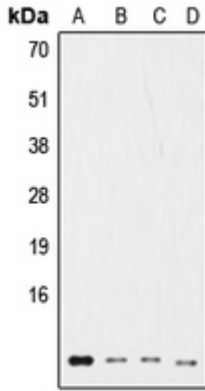
The antibody was purified by immunogen affinity chromatography.

Buffer:

Liquid in 0.42% Potassium phosphate, 0.87% Sodium chloride, pH 7.3, 30% glycerol, and 0.01% sodium azide.

WB description:

Western blot analysis of Ub expression in HeLa (A), NIH3T3 (B), rat kidney (C), HL60 (D) whole cell lysates.



IHC description:

Immunohistochemical analysis of Ub staining in human breast cancer formalin fixed paraffin embedded tissue section. The section was pre-treated using heat mediated antigen retrieval with sodium citrate buffer (pH 6.0). The section was then incubated with the antibody at room temperature and detected using an HRP conjugated compact polymer system. DAB was used as the chromogen. The section was then counterstained with haematoxylin and mounted with DPX.

Storage:

Store at -20°C. Avoid repeated freeze / thaw cycles.