

**Manufacturer/Supplier:**

WUXI DONGLIN SCI&TECH DEVELOPMENT CO., LTD

**Address:** A1-203 Mingpin CityII, No.8 Xihudong Road, Liangxi District  
Wuxi Jiangsu Province, China

TELE: 86-510-82732223

FAX: 86-510-82720101-8014

**Web :** [www.dldevelop.com](http://www.dldevelop.com)

Email: [info@dldevelop.com.cn](mailto:info@dldevelop.com.cn)    [service@dldevelop.com.cn](mailto:service@dldevelop.com.cn)

**Product name:** Rabbit anti-Tyrosinase Antibody

**Catalog:** DL91200A

**Synonyms:** Tyrosinase; LB24-AB; Monophenol  
monooxygenase; SK29-AB; Tumor rejection  
antigen AB

**Immunogen:** KLH-conjugated synthetic peptide encompassing a  
sequence within the C-term region of human  
Tyrosinase. The exact sequence is proprietary.

**Form:** Liquid

**Concentration:** 1mg/mL

**Size:** 100 ul/50 ul

**Host:** Rabbit

**Reactivity:** Human

**Application:** WB, IHC, IF/IC

**Clonality:** Polyclonal

**Dilution:** WB (1/500 - 1/1000),  
IHC (1/100 - 1/200), IF/IC (1/100 -  
1/500)

**Entrez Gene:** 7299

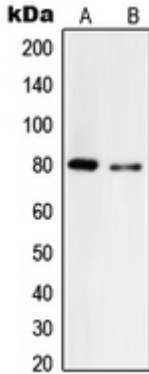
**SwissProt:** P14679

**Purification:** The antibody was purified by immunogen affinity chromatography.

**Buffer:** Liquid in 0.42% Potassium phosphate, 0.87% Sodium chloride, pH 7.3, 30% glycerol, and 0.01% sodium azide.

**WB description:**

Western blot analysis of Tyrosinase expression in A375 (A), HepG2 (B) whole cell lysates.

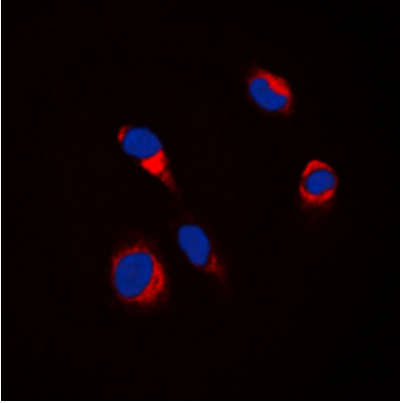


### IHC description:

Immunohistochemical analysis of Tyrosinase staining in human liver formalin fixed paraffin embedded tissue section. The section was pre-treated using heat mediated antigen retrieval with sodium citrate buffer (pH 6.0). The section was then incubated with the antibody at room temperature and detected using an HRP conjugated compact polymer system. AEC was used as the chromogen. The section was then counterstained with haematoxylin and mounted with DPX.

### IF/ICC description:

Immunofluorescent analysis of Tyrosinase staining in HepG2 cells. Formalin-fixed cells were permeabilized with 0.1% Triton X-100 in TBS for 5-10 minutes and blocked with 3% BSA-PBS for 30 minutes at room temperature. Cells were probed with the primary ant



**Storage:**

Store at -20°C. Avoid repeated freeze / thaw cycles.