

Manufacturer/Supplier:

WUXI DONGLIN SCI&TECH DEVELOPMENT CO., LTD

Address: A1-203 Mingpin CityII, No.8 Xihudong Road, Liangxi District
Wuxi Jiangsu Province, China

TELE: 86-510-82732223

FAX: 86-510-82720101-8014

Web : www.dldevelop.com

Email: info@dldevelop.com.cn service@dldevelop.com.cn

Product name: Rabbit anti-TRAF3 Antibody

Catalog: DL91196A

Synonyms: CAP1; CRAF1; TNF receptor-associated factor 3;
CAP-1; CD40 receptor-associated factor 1; CRAF1;
CD40-binding protein; CD40BP; LMP1-associated
protein 1; LAP1

Immunogen: KLH-conjugated synthetic peptide encompassing a
sequence within the center region of human TRAF3.
The exact sequence is proprietary.

Form: Liquid

Concentration: 1mg/mL

Size: 100 ul/50 ul

Host: Rabbit

Reactivity:

Application: WB, IF/IC

Human, Mouse, Rat, Pig, Sheep

Clonality: Polyclonal

Dilution: WB (1/500 - 1/1000),
IF/IC (1/100 - 1/500)

Entrez Gene: 7187/22031

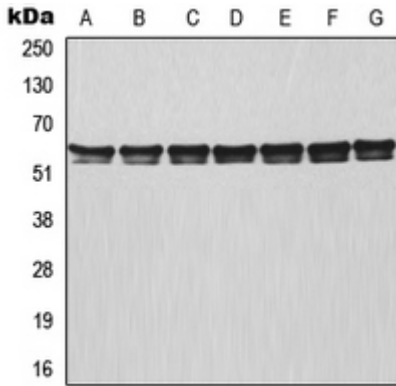
SwissProt: Q13114/Q60803

Purification: The antibody was purified by immunogen affinity chromatography.

Buffer: Liquid in 0.42% Potassium phosphate, 0.87% Sodium chloride, pH 7.3, 30% glycerol, and 0.01% sodium azide.

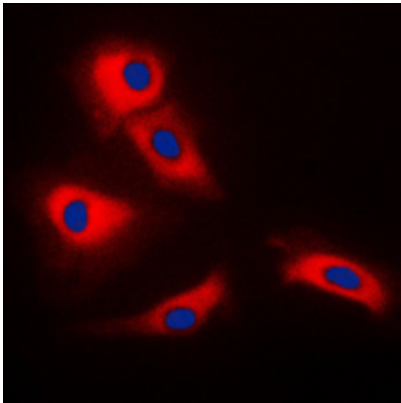
WB description:

Western blot analysis of TRAF3 expression in MCF7 (A), HeLa (B), Raji (C), NIH3T3 (D), mouse lung (E), rat colon (F), PC12 (G) whole cell lysates.



IF/ICC description:

Immunofluorescent analysis of TRAF3 staining in HeLa cells. Formalin-fixed cells were permeabilized with 0.1% Triton X-100 in TBS for 5-10 minutes and blocked with 3% BSA-PBS for 30 minutes at room temperature. Cells were probed with the primary antibody



Storage:



Store at -20°C. Avoid repeated freeze / thaw cycles.