

Manufacturer/Supplier:

WUXI DONGLIN SCI&TECH DEVELOPMENT CO., LTD

Address: A1-203 Mingpin CityII, No.8 Xihudong Road, Liangxi District
Wuxi Jiangsu Province, China

TELE: 86-510-82732223

FAX: 86-510-82720101-8014

Web : www.dldevelop.com

Email: info@dldevelop.com.cn service@dldevelop.com.cn

Product name: Rabbit anti-NKX2-1 Antibody

Catalog: DL91168A

Synonyms: NKX2A; TITF1; TTF1; Homeobox protein
Nkx-2.1; Homeobox protein NK-2 homolog A;
Thyroid nuclear factor 1; Thyroid transcription
factor 1; TTF-1

Immunogen: KLH-conjugated synthetic peptide encompassing a
sequence within the N-term region of human
NKX2-1. The exact sequence is proprietary.

Form: Liquid

Concentration: 1mg/mL

Size: 100 ul/50 ul

Host: Rabbit

Reactivity:

Application: WB

Human, Mouse, Rat, Dog, Pig, Sheep
, Zebrafish

Clonality: Polyclonal

Dilution: WB (1/500 - 1/1000)

Entrez Gene: 7080/21869

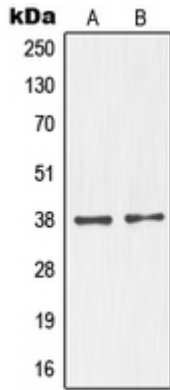
SwissProt: P43699/P50220/P23441

Purification: The antibody was purified by immunogen affinity chromatography.

Buffer: Liquid in 0.42% Potassium phosphate, 0.87% Sodium chloride, pH 7.3, 30% glycerol, and 0.01% sodium azide.

WB description:

Western blot analysis of NKX2-1 expression in MAD109 (A), HeLa (B), SP2/0 (C) whole cell lysates.



Storage:

Store at -20°C. Avoid repeated freeze / thaw cycles.