

Manufacturer/Supplier:

WUXI DONGLIN SCI&TECH DEVELOPMENT CO., LTD

Address: A1-203 Mingpin CityII, No.8 Xihudong Road, Liangxi District
Wuxi Jiangsu Province, China

TELE: 86-510-82732223

FAX: 86-510-82720101-8014

Web : www.dldevelop.com

Email: info@dldevelop.com.cn service@dldevelop.com.cn

Product name: Rabbit anti-THRA Antibody

Catalog: DL91162A

Synonyms: EAR7; ERBA1; NR1A1; THRA1; THRA2; Thyroid hormone receptor alpha; Nuclear receptor subfamily 1 group A member 1; V-erbA-related protein 7; EAR-7; c-erbA-1; c-erbA-alpha

Immunogen: KLH-conjugated synthetic peptide encompassing a sequence within the N-term region of human THRA. The exact sequence is proprietary.

Form: Liquid

Concentration: 1mg/mL

Size: 100 ul/50 ul

Host: Rabbit

Reactivity:

Application: WB, IHC

Human, Mouse, Rat, Dog, Monkey,
Pig

Clonality: Polyclonal

Dilution: WB (1/500 - 1/1000),
IHC (1/100 - 1/200)

Entrez Gene: 7067/21833/81812

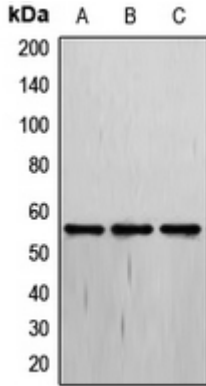
SwissProt: P10827/P63058/P63059

Purification: The antibody was purified by immunogen affinity chromatography.

Buffer: Liquid in 0.42% Potassium phosphate, 0.87% Sodium chloride, pH 7.3, 30% glycerol, and 0.01% sodium azide.

WB description:

Western blot analysis of THRA expression in MCF7 (A), Jurkat (B), HepG2 (C) whole cell lysates.



IHC description:

Immunohistochemical analysis of THRA staining in human lung cancer formalin fixed paraffin embedded tissue section. The section was pre-treated using heat mediated antigen retrieval with sodium citrate buffer (pH 6.0). The section was then incubated with the antibody at room temperature and detected using an HRP conjugated compact polymer system. DAB was used as the chromogen. The section was then counterstained with haematoxylin and mounted with DPX.

Storage:

Store at -20°C. Avoid repeated freeze / thaw cycles.