

Manufacturer/Supplier:

WUXI DONGLIN SCI&TECH DEVELOPMENT CO., LTD

Address: A1-203 Mingpin CityII, No.8 Xihudong Road, Liangxi District
Wuxi Jiangsu Province, China

TELE: 86-510-82732223

FAX: 86-510-82720101-8014

Web : www.dldevelop.com

Email: info@dldevelop.com.cn service@dldevelop.com.cn

Product name: Rabbit anti-TGF beta 1 Antibody

Catalog: DL91154A

Synonyms: TGFβ; Transforming growth factor beta-1;
TGF-beta-1

Immunogen: KLH-conjugated synthetic peptide encompassing a
sequence within the C-term region of human TGF
beta 1. The exact sequence is proprietary.

Form: Liquid

Concentration: 1mg/mL

Size: 100 ul/50 ul

Host: Rabbit

Reactivity:
Human, Mouse, Rat, Bovine, Dog, Pig, Sheep

Application: WB, IHC, IF/IC, IP

Clonality: Polyclonal

Dilution: WB (1/500 - 1/1000),
IHC (1/100 - 1/200), IF/IC (1/100 -
1/500), IP (1/10 - 1/100)

Entrez Gene: 7534/22631/25578

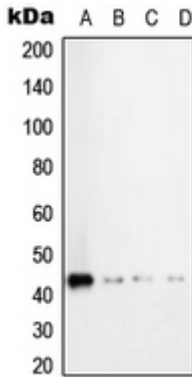
SwissProt: P63104/P63101/P63102

Purification: The antibody was purified by immunogen affinity chromatography.

Buffer: Liquid in 0.42% Potassium phosphate, 0.87% Sodium chloride, pH 7.3, 30% glycerol, and 0.01% sodium azide.

WB description:

Western blot analysis of 14-3-3 zeta (pS58) expression in MCF7 (A), A549 (B), SP2/0 (C), rat liver (D), NIH3T3 (E), A431 (F) whole cell lysates.

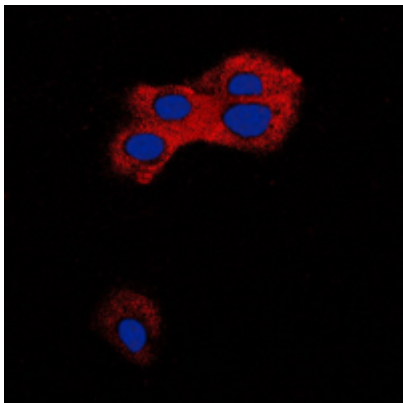


IHC description:

Immunohistochemical analysis of 14-3-3 zeta (pS58) staining in human breast cancer formalin fixed paraffin embedded tissue section. The section was pre-treated using heat mediated antigen retrieval with sodium citrate buffer (pH 6.0). The section was then incubated with the antibody at room temperature and detected using an HRP conjugated compact polymer system. DAB was used as the chromogen. The section was then counterstained with haematoxylin and mounted with DPX.

IF/ICC description:

Immunofluorescent analysis of 14-3-3 zeta (pS58) staining in A549 cells. Formalin-fixed cells were permeabilized with 0.1% Triton X-100 in TBS for 5-10 minutes and blocked with 3% BSA-PBS for 30 minutes at room temperature. Cells were probed with the prim



IP description:

Storage:

Store at -20°C. Avoid repeated freeze / thaw cycles.