

Manufacturer/Supplier:

WUXI DONGLIN SCI&TECH DEVELOPMENT CO., LTD

Address: A1-203 Mingpin CityII, No.8 Xihudong Road. Liangxi District
Wuxi Jiangsu Province, China

TELE: 86-510-82732223

FAX: 86-510-82720101-8014

Web : www.dldevelop.com

Email: info@dldevelop.com.cn service@dldevelop.com.cn

Product name: Rabbit anti-MST2 Antibody

Catalog: DL91120A

Synonyms: KRS1; MST2; Serine/threonine-protein kinase 3;
Mammalian STE20-like protein kinase 2; MST-2;
STE20-like kinase MST2; Serine/threonine-protein
kinase Krs-1

Immunogen: KLH-conjugated synthetic peptide encompassing a
sequence within the C-term region of human MST2.
The exact sequence is proprietary.

Form: Liquid

Concentration: 1mg/mL

Size: 100 ul/50 ul

Host: Rabbit

Reactivity:

Application: WB

Human, Mouse, Rat, Bovine, Monkey

Clonality: Polyclonal

Dilution: WB (1/500 - 1/1000)

Entrez Gene: 6788/56274/65189

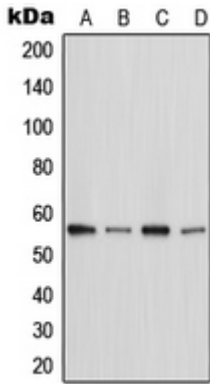
SwissProt: Q13188/Q9JI10/O54748

Purification: The antibody was purified by immunogen affinity chromatography.

Buffer: Liquid in 0.42% Potassium phosphate, 0.87% Sodium chloride, pH 7.3, 30% glycerol, and 0.01% sodium azide.

WB description:

Western blot analysis of MST2 expression in HeLa (A), Raw264.7 (B), C6 (C), rat skeletal muscle (D) whole cell lysates.



Storage:

Store at -20°C. Avoid repeated freeze / thaw cycles.