

**Manufacturer/Supplier:**

WUXI DONGLIN SCI&TECH DEVELOPMENT CO., LTD

**Address:** A1-203 Mingpin CityII, No.8 Xihudong Road, Liangxi District  
Wuxi Jiangsu Province, China

TELE: 86-510-82732223

FAX: 86-510-82720101-8014

**Web :** [www.dldevelop.com](http://www.dldevelop.com)

Email: [info@dldevelop.com.cn](mailto:info@dldevelop.com.cn)    [service@dldevelop.com.cn](mailto:service@dldevelop.com.cn)

**Product name:** Rabbit anti-SAPK3 Antibody

**Catalog:** DL91045A

**Synonyms:** ERK6; SAPK3; Mitogen-activated protein kinase 12; MAP kinase 12; MAPK 12; Extracellular signal-regulated kinase 6; ERK-6; Mitogen-activated protein kinase p38 gamma; MAP kinase p38 gamma; Stress-activated protein kinase 3

**Immunogen:** KLH-conjugated synthetic peptide encompassing a sequence within the center region of human SAPK3. The exact sequence is proprietary.

**Form:** Liquid

**Concentration:** 1mg/mL

**Size:** 100 ul/50 ul

**Host:** Rabbit

**Reactivity:**

Human, Mouse, Rat, Monkey

**Application:** WB**Clonality:** Polyclonal**Dilution:** WB (1/500 - 1/1000)**Entrez Gene:**

6300/29857/60352

**SwissProt:**

P53778/O08911/Q63538

**Purification:**

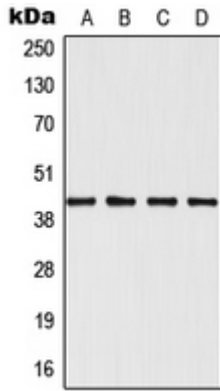
The antibody was purified by immunogen affinity chromatography.

**Buffer:**

Liquid in 0.42% Potassium phosphate, 0.87% Sodium chloride, pH 7.3, 30% glycerol, and 0.01% sodium azide.

**WB description:**

Western blot analysis of SAPK3 expression in Jurkat (A), HeLa (B), NIH3T3 (C), H9C2 (D) whole cell lysates.



**Storage:**

Store at -20°C. Avoid repeated freeze / thaw cycles.