

Manufacturer/Supplier:

WUXI DONGLIN SCI&TECH DEVELOPMENT CO., LTD

Address: A1-203 Mingpin CityII, No.8 Xihudong Road, Liangxi District
Wuxi Jiangsu Province, China

TELE: 86-510-82732223

FAX: 86-510-82720101-8014

Web : www.dldevelop.com

Email: info@dldevelop.com.cn service@dldevelop.com.cn

Product name: Rabbit anti-RPL10 Antibody

Catalog: DL91017A

Synonyms: DXS648E; QM; 60S ribosomal protein L10;
Laminin receptor homolog; Protein QM; Tumor
suppressor QM

Immunogen: KLH-conjugated synthetic peptide encompassing a
sequence within the center region of human RPL10.
The exact sequence is proprietary.

Form: Liquid

Concentration: 1mg/mL

Size: 100 ul/50 ul

Host: Rabbit

Reactivity:
Human, Mouse, Rat, Bovine, Monke

Application: WB

y,Pig,Sheep

Clonality: Polyclonal

Dilution: WB (1/500 - 1/1000)

Entrez Gene: 6134/110954/81764

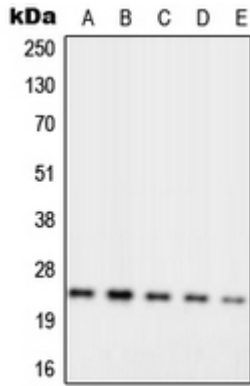
SwissProt: P27635/Q6Z WV3/Q6PDV7

Purification: The antibody was purified by immunogen affinity chromatography.

Buffer: Liquid in 0.42% Potassium phosphate, 0.87% Sodium chloride, pH 7.3, 30% glycerol, and 0.01% sodium azide.

WB description:

Western blot analysis of RPL10 expression in MCF7 (A), Jurkat (B), K562 (C), Raw264.7 (D), PC12 (E) whole cell lysates.



Storage:

Store at -20°C. Avoid repeated freeze / thaw cycles.