

Manufacturer/Supplier:

WUXI DONGLIN SCI&TECH DEVELOPMENT CO., LTD

Address: A1-203 Mingpin CityII, No.8 Xihudong Road, Liangxi District
Wuxi Jiangsu Province, China

TELE: 86-510-82732223

FAX: 86-510-82720101-8014

Web : www.dldevelop.com

Email: info@dldevelop.com.cn service@dldevelop.com.cn

Product name: Rabbit anti-RPL3 Antibody

Catalog: DL91015A

Synonyms: 60S ribosomal protein L3; HIV-1 TAR
RNA-binding protein B; TARBP-B

Immunogen: KLH-conjugated synthetic peptide encompassing a
sequence within the center region of human RPL3.
The exact sequence is proprietary.

Form: Liquid

Concentration: 1mg/mL

Size: 100 ul/50 ul

Host: Rabbit

Reactivity:

Human, Mouse, Rat, Bovine, Dog, Monkey

Application: WB

Clonality: Polyclonal

Dilution: WB (1/500 - 1/1000)

Entrez Gene: 6122/27367/300079

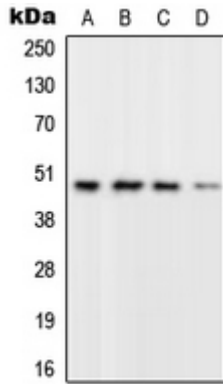
SwissProt: P39023/P27659/P21531

Purification: The antibody was purified by immunogen affinity chromatography.

Buffer: Liquid in 0.42% Potassium phosphate, 0.87% Sodium chloride, pH 7.3, 30% glycerol, and 0.01% sodium azide.

WB description:

Western blot analysis of RPL3 expression in A549 (A), SP2/0 (B), PC12 (C), Human brain (D) whole cell lysates.



Storage:

Store at -20°C. Avoid repeated freeze / thaw cycles.