

Manufacturer/Supplier:

WUXI DONGLIN SCI&TECH DEVELOPMENT CO., LTD

Address: A1-203 Mingpin CityII, No.8 Xihudong Road, Liangxi District
Wuxi Jiangsu Province, China

TELE: 86-510-82732223

FAX: 86-510-82720101-8014

Web : www.dldevelop.com

Email: info@dldevelop.com.cn service@dldevelop.com.cn

Product name: Rabbit anti-ROR gamma Antibody

Catalog: DL91014A

Synonyms: NR1F3; RORG; RZRG; Nuclear receptor ROR-gamma; Nuclear receptor RZR-gamma; Nuclear receptor subfamily 1 group F member 3; RAR-related orphan receptor C; Retinoid-related orphan receptor-gamma

Immunogen: KLH-conjugated synthetic peptide encompassing a sequence within the center region of human ROR gamma. The exact sequence is proprietary.

Form: Liquid

Concentration: 1mg/mL

Size: 100 ul/50 ul

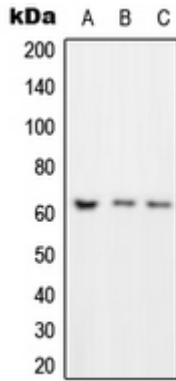
Host: Rabbit

Reactivity:

Human, Mouse, Rat, Bovine

Application: WB**Clonality:** Polyclonal**Dilution:** WB (1/500 - 1/1000)**Entrez Gene:** 6097/19885**SwissProt:** P51449/P51450**Purification:** The antibody was purified by immunogen affinity chromatography.**Buffer:** Liquid in 0.42% Potassium phosphate, 0.87% Sodium chloride, pH 7.3, 30% glycerol, and 0.01% sodium azide.**WB description:**

Western blot analysis of ROR gamma expression in Jurkat (A), NIH3T3 (B), PC12 (C) whole cell lysates.



Storage:

Store at -20°C. Avoid repeated freeze / thaw cycles.