

Manufacturer/Supplier:

WUXI DONGLIN SCI&TECH DEVELOPMENT CO., LTD

Address: A1-203 Mingpin CityII, No.8 Xihudong Road, Liangxi District
Wuxi Jiangsu Province, China

TELE: 86-510-82732223

FAX: 86-510-82720101-8014

Web : www.dldevelop.com

Email: info@dldevelop.com.cn service@dldevelop.com.cn

Product name: Rabbit anti-RIT1 Antibody

Catalog: DL91011A

Synonyms: RIBB; RIT; ROC1; GTP-binding protein Rit1;
Ras-like protein expressed in many tissues; Ras-like
without CAAX protein 1

Immunogen: KLH-conjugated synthetic peptide encompassing a
sequence within the C-term region of human RIT1.
The exact sequence is proprietary.

Form: Liquid

Concentration: 1mg/mL

Size: 100 ul/50 ul

Host: Rabbit

Reactivity:

Application: WB

Human, Bovine, Dog, Pig, Rabbit, S

heap

Clonality: Polyclonal

Dilution: WB (1/500 - 1/1000)

Entrez Gene: 6016

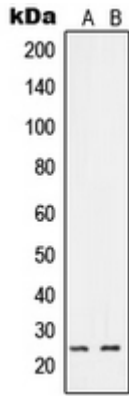
SwissProt: Q92963

Purification: The antibody was purified by immunogen affinity chromatography.

Buffer: Liquid in 0.42% Potassium phosphate, 0.87% Sodium chloride, pH 7.3, 30% glycerol, and 0.01% sodium azide.

WB description:

Western blot analysis of RIT1 expression in A549 (A), HeLa (B) whole cell lysates.



Storage:

Store at -20°C. Avoid repeated freeze / thaw cycles.