

Manufacturer/Supplier:

WUXI DONGLIN SCI&TECH DEVELOPMENT CO., LTD

Address: A1-203 Mingpin CityII, No.8 Xihudong Road, Liangxi District
Wuxi Jiangsu Province, China

TELE: 86-510-82732223

FAX: 86-510-82720101-8014

Web : www.dldevelop.com

Email: info@dldevelop.com.cn service@dldevelop.com.cn

Product name: Rabbit anti-PTEN Antibody

Catalog: DL90965A

Synonyms: MMAC1; TEP1; Phosphatidylinositol 3,4,5-trisphosphate 3-phosphatase and dual-specificity protein phosphatase PTEN; Mutated in multiple advanced cancers 1; Phosphatase and tensin homolog

Immunogen: KLH-conjugated synthetic peptide encompassing a sequence within the C-term region of human PTEN. The exact sequence is proprietary.

Form: Liquid

Concentration: 1mg/mL

Size: 100 ul/50 ul

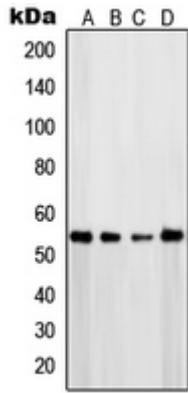
Host: Rabbit

Reactivity:

Human, Mouse, Rat, Bovine, Dog, Zebrafish

Application: WB**Clonality:** Polyclonal**Dilution:** WB (1/500 - 1/1000)**Entrez Gene:** 5728/19211**SwissProt:** P60484/O08586**Purification:** The antibody was purified by immunogen affinity chromatography.**Buffer:** Liquid in 0.42% Potassium phosphate, 0.87% Sodium chloride, pH 7.3, 30% glycerol, and 0.01% sodium azide.**WB description:**

Western blot analysis of PTEN expression in HeLa (A), MCF7 (B), HepG2 (C), NIH3T3 (D) whole cell lysates.



Storage:

Store at -20°C. Avoid repeated freeze / thaw cycles.