

Manufacturer/Supplier:

WUXI DONGLIN SCI&TECH DEVELOPMENT CO., LTD

Address: A1-203 Mingpin CityII, No.8 Xihudong Road, Liangxi District
Wuxi Jiangsu Province, China

TELE: 86-510-82732223

FAX: 86-510-82720101-8014

Web : www.dldevelop.com

Email: info@dldevelop.com.cn service@dldevelop.com.cn

Product name: Rabbit anti-Trypsin 3 Antibody

Catalog: DL90956A

Synonyms: PRSS4; TRY3; TRY4; Trypsin-3; Brain trypsinogen; Mesotrypsinogen; Serine protease 3; Serine protease 4; Trypsin III; Trypsin IV

Immunogen: KLH-conjugated synthetic peptide encompassing a sequence within the center region of human Trypsin 3. The exact sequence is proprietary.

Form: Liquid

Concentration: 1mg/mL

Size: 100 ul/50 ul

Host: Rabbit

Reactivity: Human

Application: WB

Clonality: Polyclonal

Dilution: WB (1/500 - 1/1000)

Entrez Gene: 5646

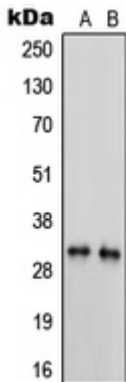
SwissProt: P35030

Purification: The antibody was purified by immunogen affinity chromatography.

Buffer: Liquid in 0.42% Potassium phosphate, 0.87% Sodium chloride, pH 7.3, 30% glycerol, and 0.01% sodium azide.

WB description:

Western blot analysis of Trypsin 3 expression in MDAMB231 (A), HL60 (B) whole cell lysates.



Storage:

Store at -20°C. Avoid repeated freeze / thaw cycles.