

Manufacturer/Supplier:

WUXI DONGLIN SCI&TECH DEVELOPMENT CO., LTD

Address: A1-203 Mingpin CityII, No.8 Xihudong Road, Liangxi District
Wuxi Jiangsu Province, China

TELE: 86-510-82732223

FAX: 86-510-82720101-8014

Web : www.dldevelop.com

Email: info@dldevelop.com.cn service@dldevelop.com.cn

Product name: Rabbit anti-MKK1 (pT286) Antibody

Catalog: DL90949A

Synonyms: MEK1; PRKMK1; Dual specificity
mitogen-activated protein kinase kinase 1; MAP
kinase kinase 1; MAPKK 1; MKK1; ERK activator
kinase 1; MAPK/ERK kinase 1; MEK 1

Immunogen: KLH-conjugated synthetic peptide encompassing a
sequence within the center region of human MKK1.
The exact sequence is proprietary.

Form: Liquid

Concentration: 1mg/mL

Size: 100 ul/50 ul

Host: Rabbit

Reactivity:

Application: WB

Human, Mouse, Rat, Bovine, Monkey, Pig, Rabbit

Clonality: Polyclonal

Dilution: WB (1/500 - 1/1000)

Entrez Gene: 5604/26395/170851

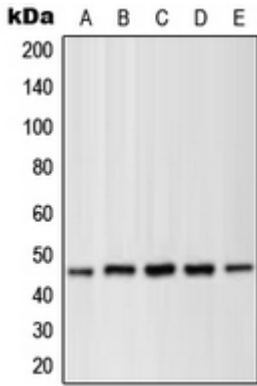
SwissProt: Q02750/P31938/Q01986

Purification: The antibody was purified by immunogen affinity chromatography.

Buffer: Liquid in 0.42% Potassium phosphate, 0.87% Sodium chloride, pH 7.3, 30% glycerol, and 0.01% sodium azide.

WB description:

Western blot analysis of MKK1 (pT286) expression in HEK293T PMA-treated (A), NIH3T3 UV-treated (B), C2C12 (C), PC12 PMA-treated (D), C6 (E) whole cell lysates.



Storage:

Store at -20°C. Avoid repeated freeze / thaw cycles.