

Manufacturer/Supplier:

WUXI DONGLIN SCI&TECH DEVELOPMENT CO., LTD

Address: A1-203 Mingpin CityII, No.8 Xihudong Road, Liangxi District
Wuxi Jiangsu Province, China

TELE: 86-510-82732223

FAX: 86-510-82720101-8014

Web : www.dldevelop.com

Email: info@dldevelop.com.cn service@dldevelop.com.cn

Product name: Rabbit anti-Beta-glucosidase 2 Antibody

Catalog: DL90940A

Synonyms: G19P1; Glucosidase 2 subunit beta; 80K-H protein;
Glucosidase II subunit beta; Protein kinase C
substrate 60.1 kDa protein heavy chain; PKCSH

Immunogen: KLH-conjugated synthetic peptide encompassing a
sequence within the center region of human
Beta-glucosidase 2. The exact sequence is
proprietary.

Form: Liquid

Concentration: 1mg/mL

Size: 100 ul/50 ul

Host: Rabbit

Reactivity: Human

Application: WB, IF/IC

Clonality: Polyclonal

Dilution: WB (1/500 - 1/1000),
IF/IC (1/100 - 1/500)

Entrez Gene: 5589

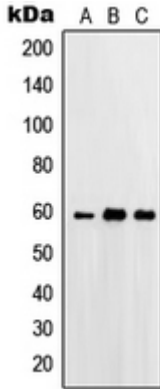
SwissProt: P14314

Purification: The antibody was purified by immunogen affinity chromatography.

Buffer: Liquid in 0.42% Potassium phosphate, 0.87% Sodium chloride, pH 7.3, 30% glycerol, and 0.01% sodium azide.

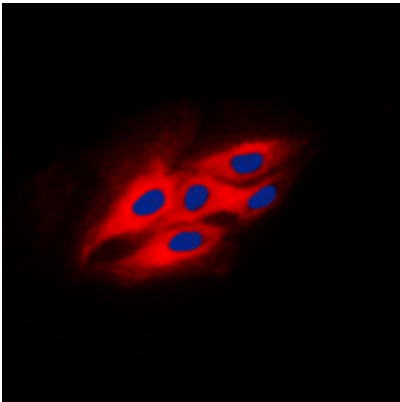
WB description:

Western blot analysis of Beta-glucosidase 2 expression in A431 (A), HeLa (B), A549 (C) whole cell lysates.



IF/ICC description:

Immunofluorescent analysis of Beta-glucosidase 2 staining in HeLa cells. Formalin-fixed cells were permeabilized with 0.1% Triton X-100 in TBS for 5-10 minutes and blocked with 3% BSA-PBS for 30 minutes at room temperature. Cells were probed with the prim



Storage:



Store at -20°C. Avoid repeated freeze / thaw cycles.