

Manufacturer/Supplier:

WUXI DONGLIN SCI&TECH DEVELOPMENT CO., LTD

Address: A1-203 Mingpin CityII, No.8 Xihudong Road, Liangxi District
Wuxi Jiangsu Province, China

TELE: 86-510-82732223

FAX: 86-510-82720101-8014

Web : www.dldevelop.com

Email: info@dldevelop.com.cn service@dldevelop.com.cn

Product name: Rabbit anti-PKN1 Antibody

Catalog: DL90937A

Synonyms: PAK1; PKN; PRK1; PRKCL1;
Serine/threonine-protein kinase N1;
Protease-activated kinase 1; PAK-1; Protein kinase
C-like 1; Protein kinase C-like PKN; Protein kinase
PKN-alpha; Protein-kinase C-related kinase 1;
Serine-threonine protein kinase N

Immunogen: KLH-conjugated synthetic peptide encompassing a
sequence within the center region of human PKN1.
The exact sequence is proprietary.

Form: Liquid

Concentration: 1mg/mL

Size: 100 ul/50 ul

Host: Rabbit

Reactivity:

Human, Mouse, Bovine, Monkey

Application: WB, IF/IC**Clonality:** Polyclonal

Dilution: WB (1/500 - 1/1000),
IF/IC (1/100 - 1/500)

Entrez Gene: 5585/320795

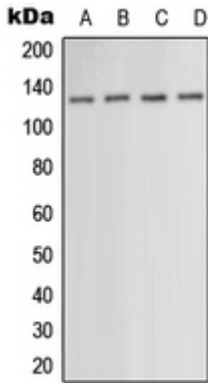
SwissProt: Q16512/P70268

Purification: The antibody was purified by immunogen affinity chromatography.

Buffer: Liquid in 0.42% Potassium phosphate, 0.87% Sodium chloride, pH 7.3, 30% glycerol, and 0.01% sodium azide.

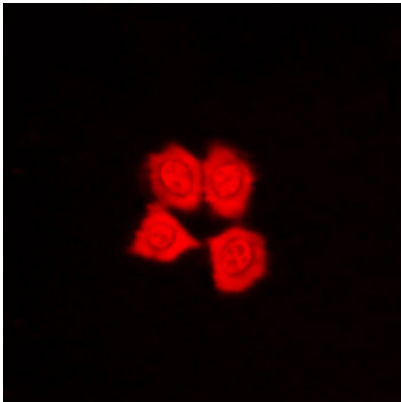
WB description:

Western blot analysis of PKN1 expression in HEK293T (A), HepG2 (B), SP2/0 (C), NIH3T3 (D) whole cell lysates.



IF/ICC description:

Immunofluorescent analysis of PKN1 staining in HepG2 cells. Formalin-fixed cells were permeabilized with 0.1% Triton X-100 in TBS for 5-10 minutes and blocked with 3% BSA-PBS for 30 minutes at room temperature. Cells were probed with the primary antibody



Storage:



Store at -20°C. Avoid repeated freeze / thaw cycles.